

User Rights

The installation of DLUBAL programs such as RSTAB, RFEM, SHAPE-THIN, SHAPE-MASSIVE etc. requires **administrator rights**.

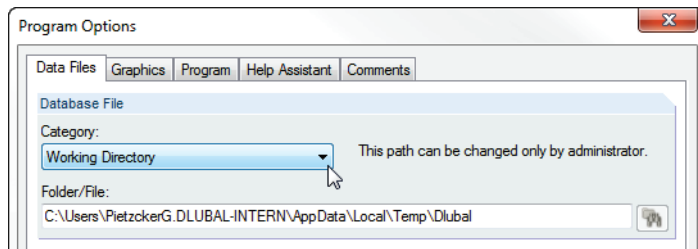
It is recommended to also use administrator rights when you start the software for the first time. If your computer won't display any error messages, you can assign the rights for running DLUBAL applications also to the Users.

Note: Only the administrator is able to assign user rights.

Rights for folders

As a User of DLUBAL programs you need rights for reading and writing concerning the following folders:

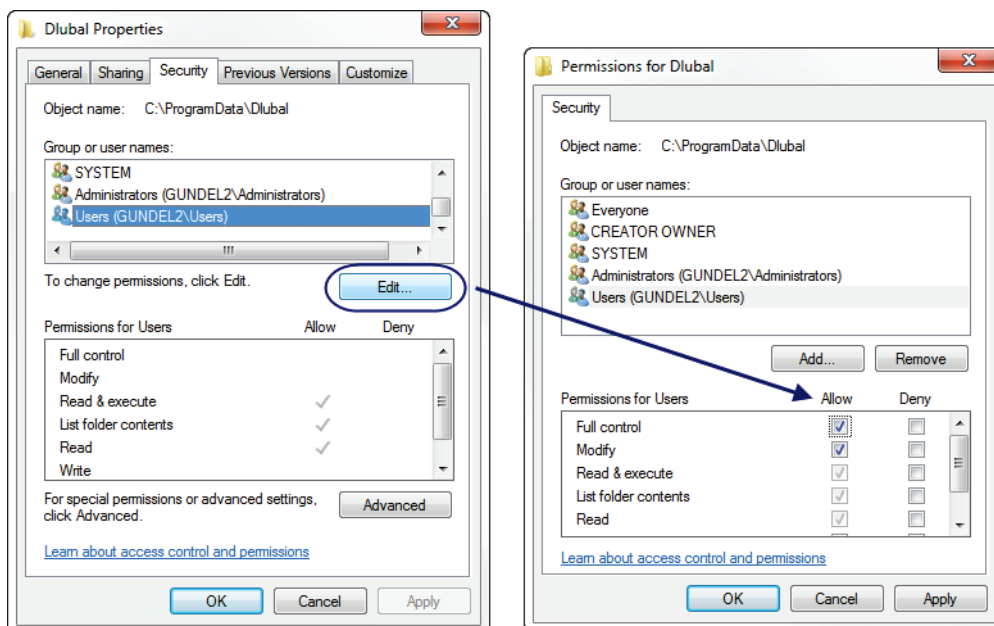
- DLUBAL program folder *RSTAB 8.xx, RFEM 5.xx, SHAPE-THIN 7 (x86)* etc.
You find the folders for example with Windows 7 in the directory *C:\Program Files\Dlupal* or *C:\Programs (x86)\Dlupal*.
- DLUBAL master data folder *General Data*
Each program has its own master data folder. You find the folder for example with Windows 7 in the directory *C:\ProgramData\Dlupal*.
- Folder of DLUBAL projects
- Folders of temporary files
You find the folders for example with Windows 7 in the directory *C:\Users\Sign-in name\AppData\Local\Temp\Dlupal* or *C:\Users\Public\Public Documents\Dluba\Temp*.
You can check the path of the working directory in the RSTAB or RFEM dialog box *Program Options*.



The rights can be assigned by means of the Explorer: Select the folder and open its properties. Then, in the dialog tab *Security*, you can define for example full control for the *Users* group or for particular Users.

Example

Full control for the user group *Users* on *C:\Programs (x86)\Dlupal*. The settings for the subfolders are usually passed on. Thus, it is sufficient to provide the Dlupal folder with full control rights.





Rights for registry

Additionally, a User needs rights for reading and writing for the following registry entries:

- HKEY_LOCAL_MACHINE\SOFTWARE\DLUBAL
- HKEY_LOCAL_MACHINE\SOFTWARE\Wow6432Node\DLUBAL
- HKEY_CURRENT_USER\Software\DLUBAL

You can assign the rights in the Registry Editor that you open by entering the command **regedit** in the input field of the Start menu. Set the path and select the entry DLUBAL. Then, by selecting *Permissions* on the *Edit* menu, you can define for example full control for the *Users* group or for particular Users.

Additional information can be found in the [video about User rights](#) which is available on our website.

If you still have problems or questions concerning the start of RSTAB and RFEM with user rights, please contact our technical support.

Your team from DLUBAL SOFTWARE GMBH