



Structural Analysis & Design Software

www.dlubal.com



Alex Bacon, EIT

Presenter

Technical Support Engineer



Amy Heilig, PE

Moderator

CEO - USA Office



Cisca Tjoa, PE

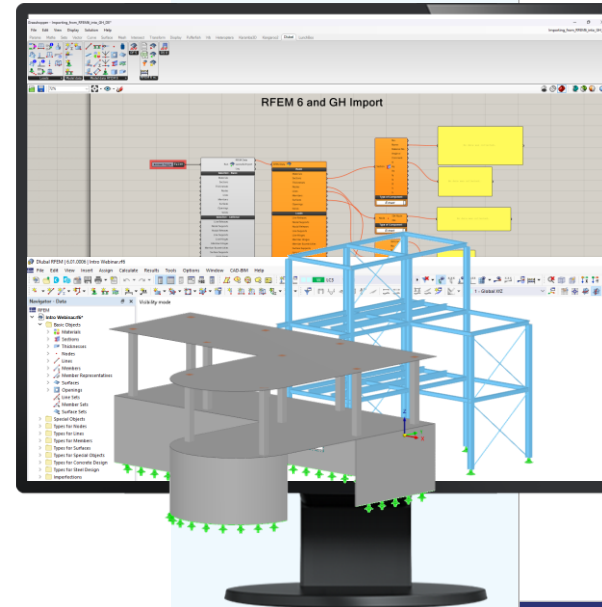
Moderator

Technical Support Engineer



Webinar

Integrated Rhino/ Grasshopper Workflows in RFEM 6



Questions During the Presentation



GoToWebinar Control Panel
Desktop



Email: info-us@dlubal.com



Show or hide control panel



File View Help

Audio

Sound Check [Green bar] ?

Computer audio
 Phone call

MUTED

[Volume slider]

[Dropdown menu]

Questions

[Enter a question for staff]

[Send]

Webinar ID: 373-901-987

GoToWebinar



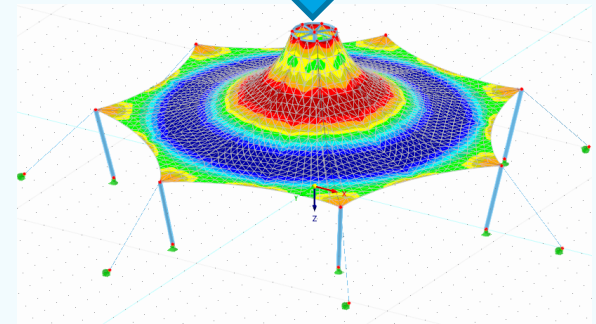
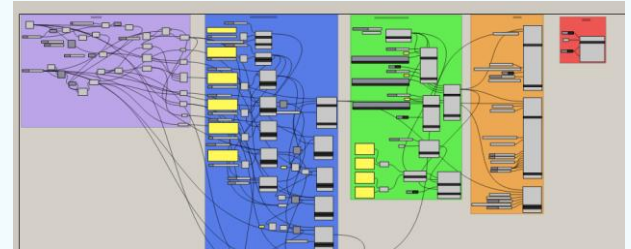
Adjust audio settings

Ask questions



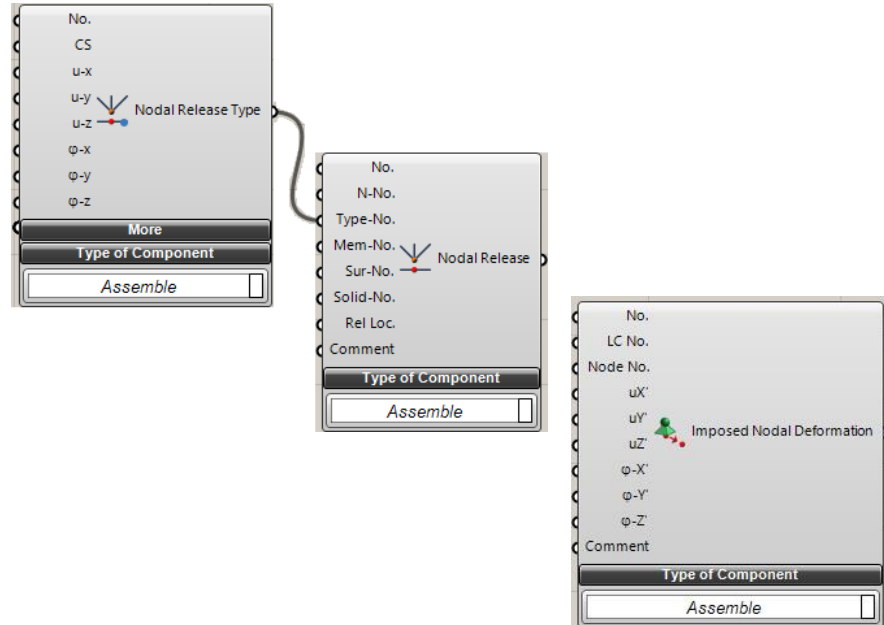
Content

- 01 New features of the GH interface
- 02 Inclusion of existing RFEM 6 objects in the GH modeling using templates
- 03 Import RFEM 6 model into GH
- 04 Modification of RFEM 6 structures using GH
- 05 Early demonstration - calculation loop using Galapagos



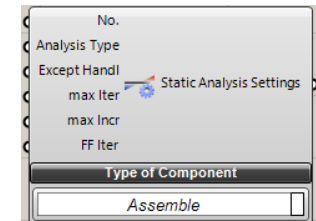
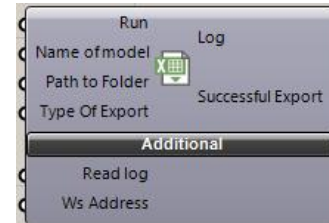
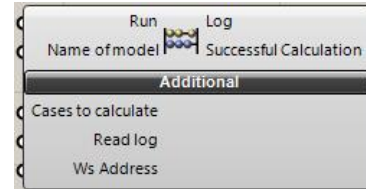
New features of the GH interface

- Dependency on Webservice *license removed*
- New component for nodal release
- New component for imposed nodal deformations



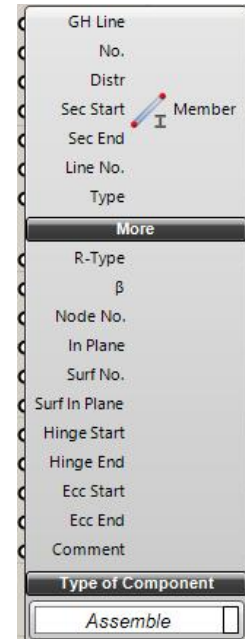
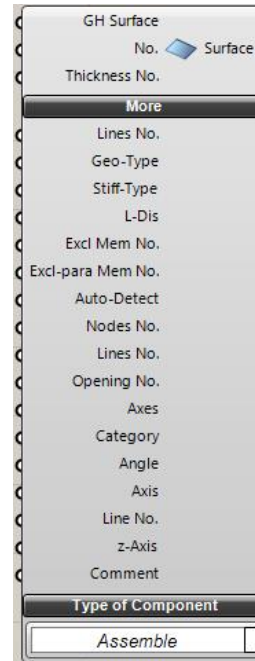
New features of the GH interface (cont'd)

- **New component for starting the calculation in RFEM 6**
- **New component for exporting the results to CSV or XML file**
- **Extension of the static analysis settings: Number of iterations, load increments, and iterations**



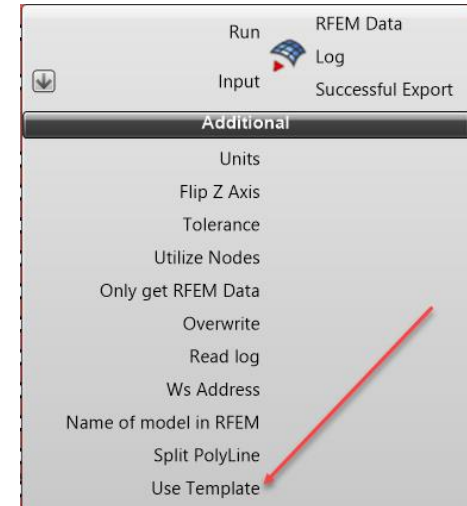
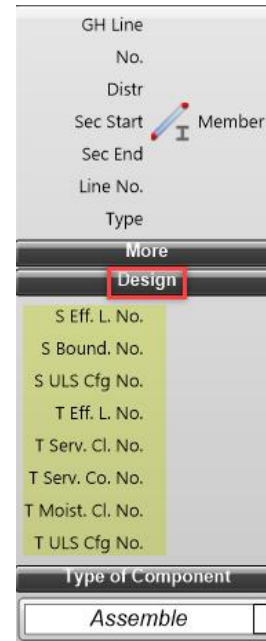
New features of the GH interface (cont'd)

- Extension of the surface component: Control of the local axis system and the integrated objects
- Extension of the member component: Member rotation via surface



New features of the GH interface (cont'd)

- Extension of the member component: New design parameters
- Templates can now be utilized when opening a new file with the Export component



— Dlubal Software Information



Visit website
www.dlubal.com

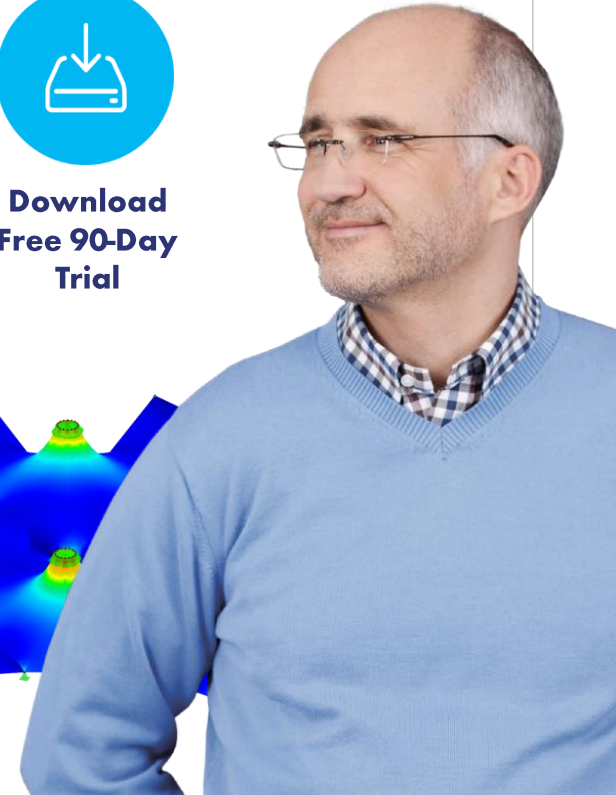
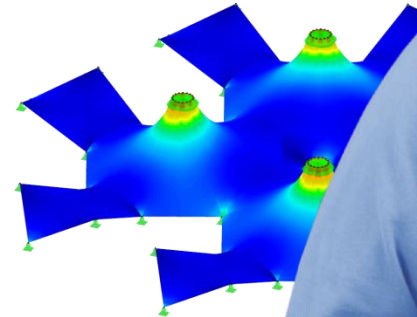
- Videos and recorded webinars
- Events and conferences
- Knowledge Base articles
- FAQs



Register for
Upcoming
Webinars



Download
Free 90-Day
Trial



Dlubal Software, Inc.
30 South 15th Street, 15th Floor
Philadelphia, PA 19102

Phone: (267) 702-2815
Email: info-us@dlubal.com



Webinars and PDH

Upcoming Webinars

1 Register www.dlubal.com

2 Support & Learning
→ Webinars



3 Registration through email

PDH Certificates

1 Automatically emailed to participants

2 Available for the full presentation

3 Additional attendees request
info-us@dlubal.com





www.dlubal.com