



# Structural Analysis & Design Software



[www.dlubal.com](http://www.dlubal.com)



**Amy Heilig, PE**

Presenter

CEO - USA Office



**Alex Bacon, EIT**

Moderator

Technical Support Engineer



**Cisca Tjoa, PE**

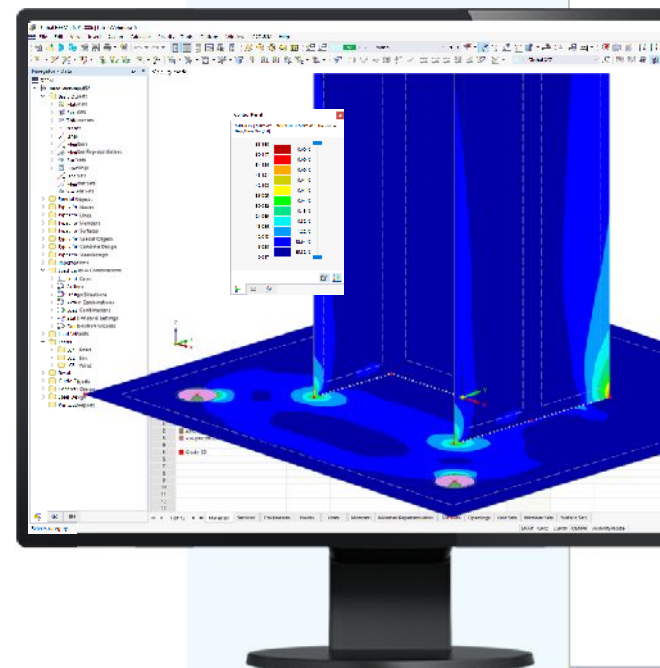
Moderator

Technical Support Engineer



Webinar

# Member, Surface, and Solid Stress- Strain Analysis in RFEM 6



# Questions During the Presentation

GoToWebinar Control Panel Desktop

Email: [info-us@dlubal.com](mailto:info-us@dlubal.com)



The screenshot shows the GoToWebinar control panel interface. Three dark blue callout boxes with white text and blue arrows point to specific features:

- Show or hide control panel:** Points to the vertical sidebar on the left containing icons for audio, chat, and other controls.
- Adjust audio settings:** Points to the 'Audio' window, which includes a 'Sound Check' indicator, radio buttons for 'Computer audio' (selected) and 'Phone call', a 'MUTED' status, and dropdown menus for 'Mikrofon (2- Sennheiser USB h...)' and 'Lautsprecher (2- Sennheiser U...)'.
- Ask questions:** Points to the 'Questions' section, which contains a text input field with the placeholder '[Enter a question for staff]', a 'Send' button, and the 'Webinar ID: 373-901-987'.

The bottom of the control panel displays the 'GoToWebinar' logo.



# CONTENT

01

**Example 1: Stress-strain analysis with members**

02

**Example 2: Stress-strain analysis with surfaces including line weld joints**

03

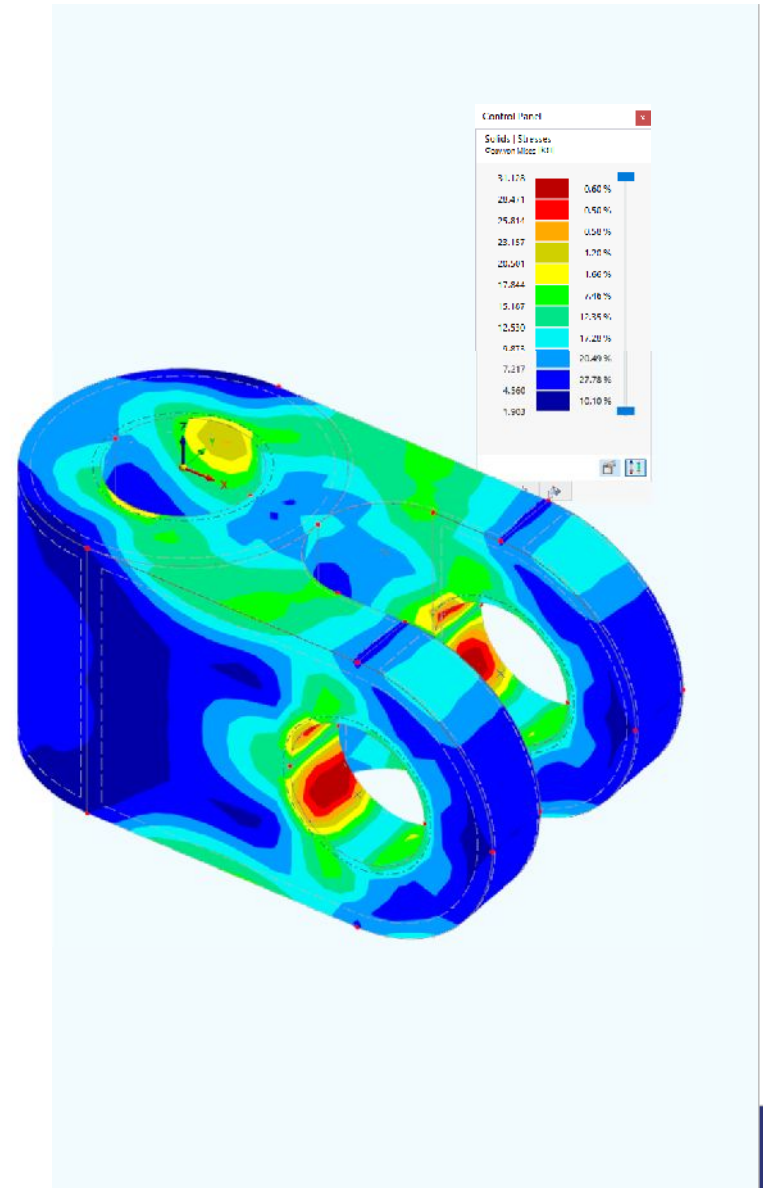
**Example 3: Stress-strain analysis with solids**

04

**Utilizing the Stress-Strain Analysis and Nonlinear Material Behavior Add-ons**

05

**Report printout documentation**

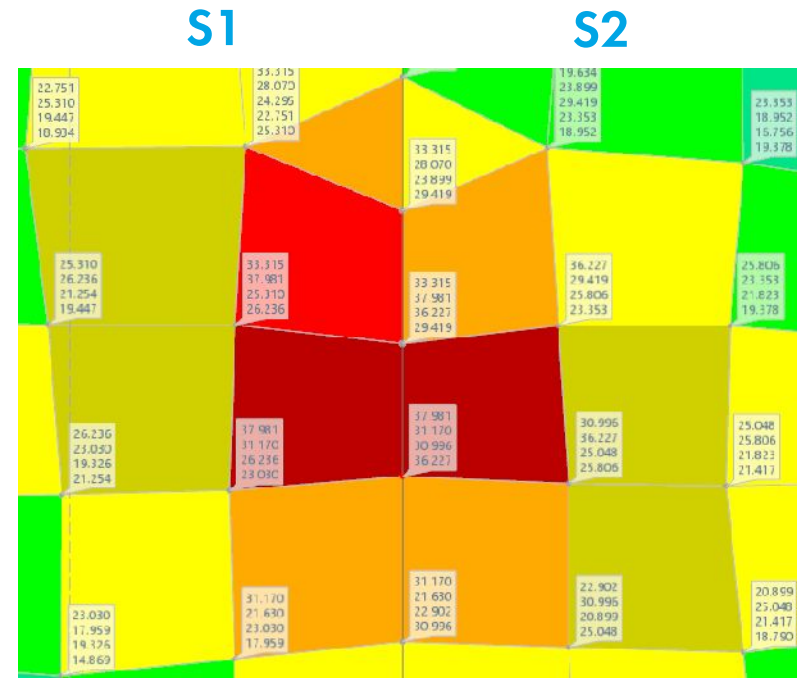
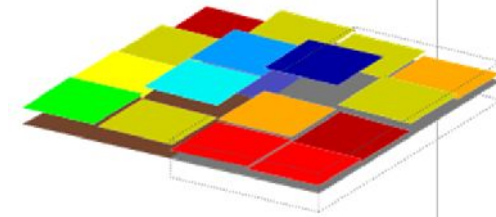




# Result Smoothing

## 1. Constant on mesh elements

- Average value with constant distribution display for each element
- Average values for each element displayed at FE mesh point (4 values total)
- Recommended for small-scale models and nonlinear plastic design

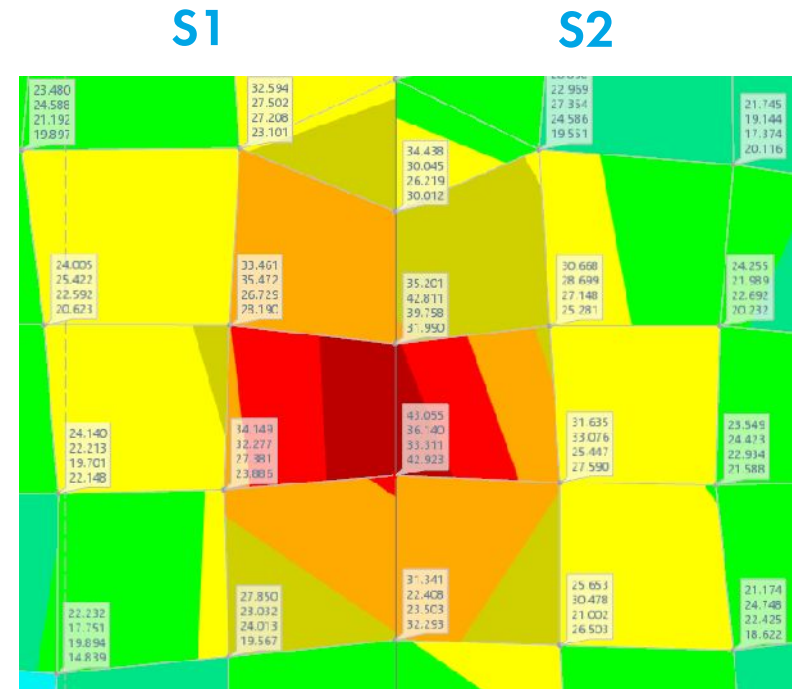
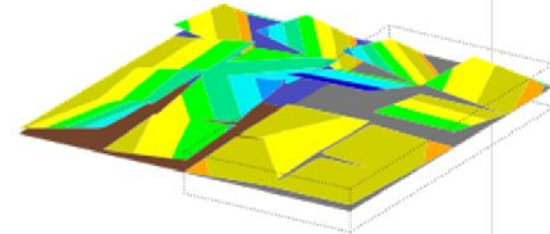




# Result Smoothing (cont'd)

## 2. Non-continuous

- Varying distribution over element
- Non-continuous display between adjacent elements
- Corner value of each element displayed at FE mesh point (4 values total)

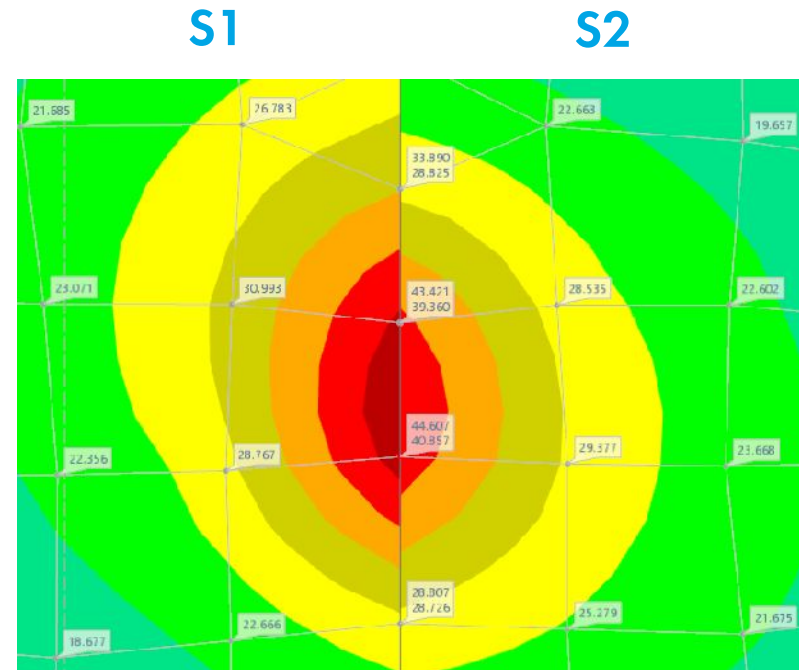
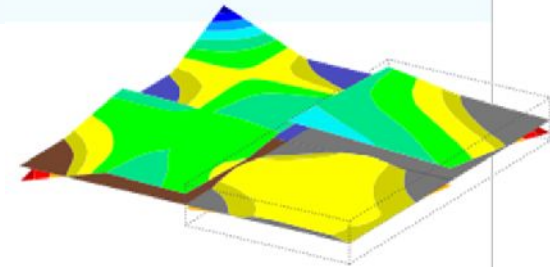




# Result Smoothing (cont'd)

## 3. Continuous within surfaces

- Result smoothing between elements within a single surface
- Non-continuous display between adjacent surfaces
- Average value of elements displayed at each FE mesh point (1 value total – 2 values total between surfaces)



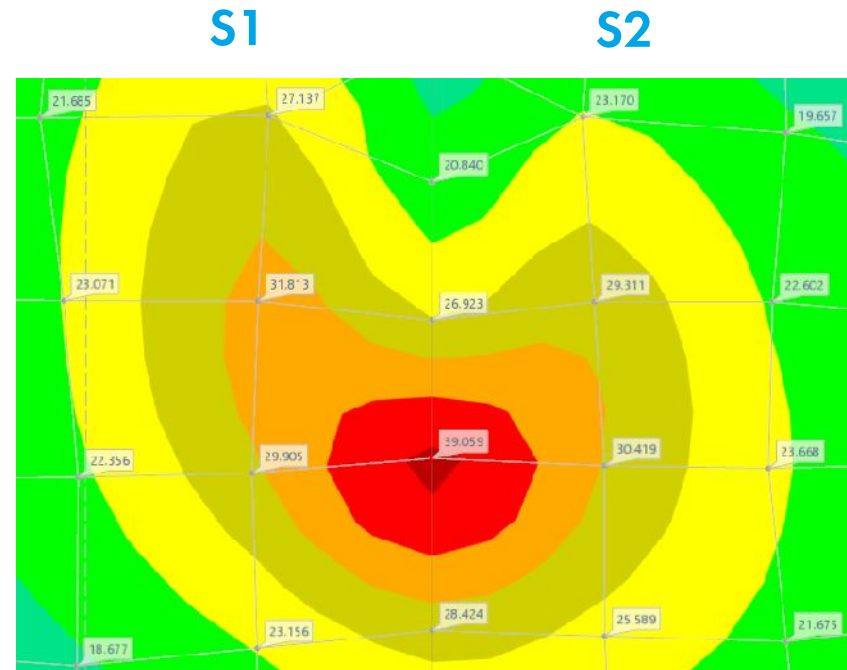
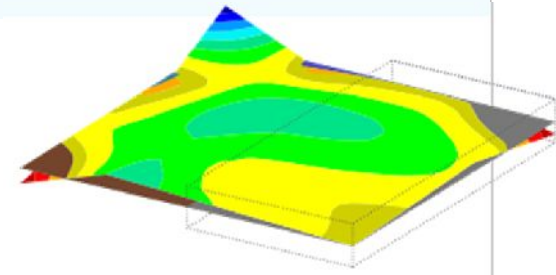




# Result Smoothing (cont'd)

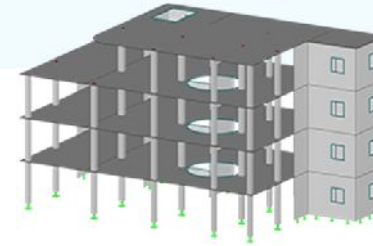
## 4. Continuous within all surfaces

- Result smoothing between all elements in model
- Continuous display between adjacent surfaces
- Average value of elements displayed at each FE mesh point (1 value total)





# Free Online Services



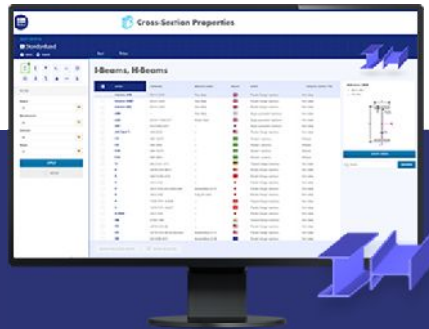
## Geo-Zone Tool

Dlubal Software provides an online tool with snow, wind and seismic zone maps.



## Cross-Section Properties

With this free online tool, you can select standardized sections from an extensive section library, define parametrized cross-sections and calculate its cross-section properties.



## FAQs & Knowledge Base

Access frequently asked questions commonly submitted to our customer support team and view helpful tips and tricks articles to improve your work.



## Models to Download

Download numerous example files here that will help you to get started and become familiar with the Dlubal programs.

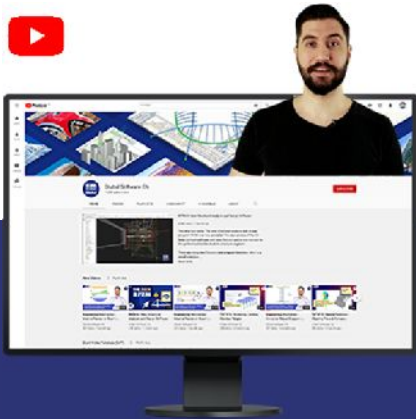




# Free Online Services

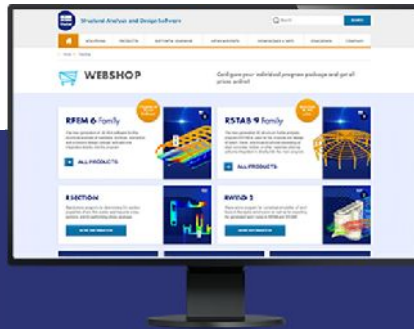
## Youtube Channel - Webinars, Videos

Videos and webinars about the structural engineering software.



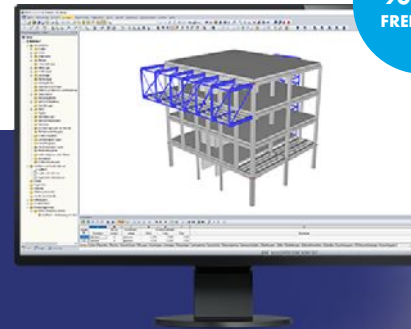
## Webshop with Prices

Configure your individual program package and get all prices online!



## Trial Licenses

The best way how to learn using our programs is to simply test them for yourself. Download a 90-day free trial version of our structural analysis & design software.



# — Dlubal Software Information



- Videos and recorded webinars
- Events and conferences
- Knowledge Base articles
- FAQs

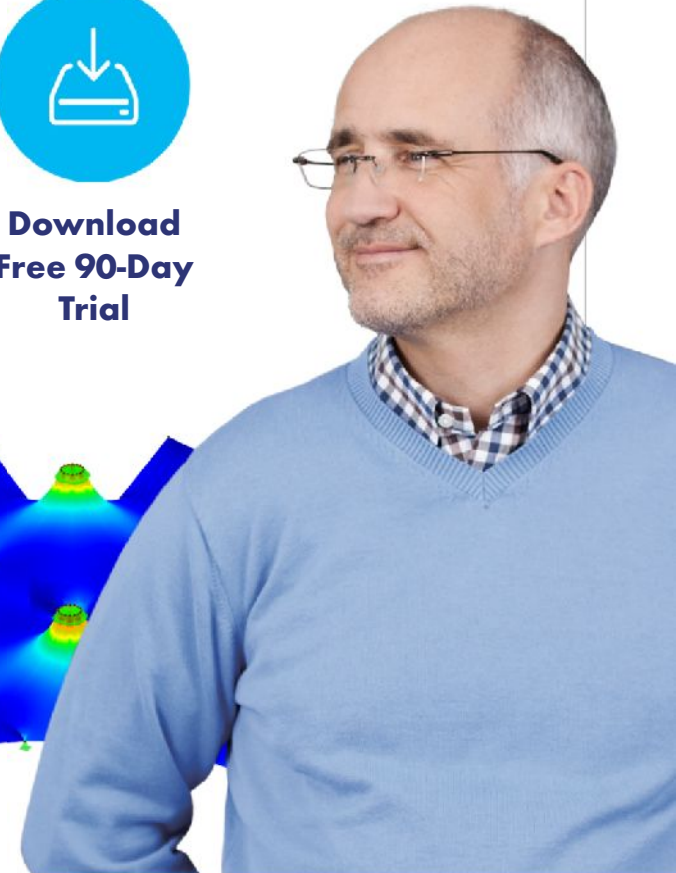
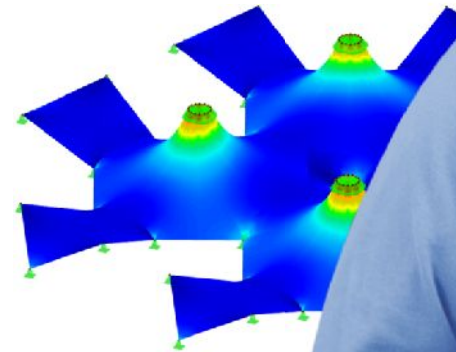
Visit website  
[www.dlubal.com](http://www.dlubal.com)



Register for  
Upcoming  
Webinars



Download  
Free 90-Day  
Trial



**Dlubal Software, Inc.**  
30 South 15th Street, 15th Floor  
The Graham Building  
Philadelphia, PA 19102

Phone: (267) 702-2815  
Email: [info-us@dlubal.com](mailto:info-us@dlubal.com)



# Webinars and PDH

## Upcoming Webinars

- 1 Register [www.dlubal.com](http://www.dlubal.com)
- 2 Support & Learning → Webinars
- 3 Registration through email



## PDH Certificates

- 1 Automatically emailed to participants
- 2 Available for the full presentation
- 3 Additional attendees request [info-us@dlubal.com](mailto:info-us@dlubal.com)





[www.dlubal.com](http://www.dlubal.com)