



# Structural Analysis & Design Software

[www.dlubal.com](http://www.dlubal.com)



**Dipl.-Ing. (FH) Andreas Hörold**  
Organizer

Marketing & Public Relations  
Dlubal Software GmbH



**Dipl.-Ing. (FH) Paul Kieloch**  
Co-Organizer

Product Engineering & Customer Support  
Dlubal Software GmbH



**Dipl.-Ing. (FH) Alexander Meierhofer**  
Co-Organizer

Head of Product Engineering Concrete & Customer Support  
Dlubal Software GmbH



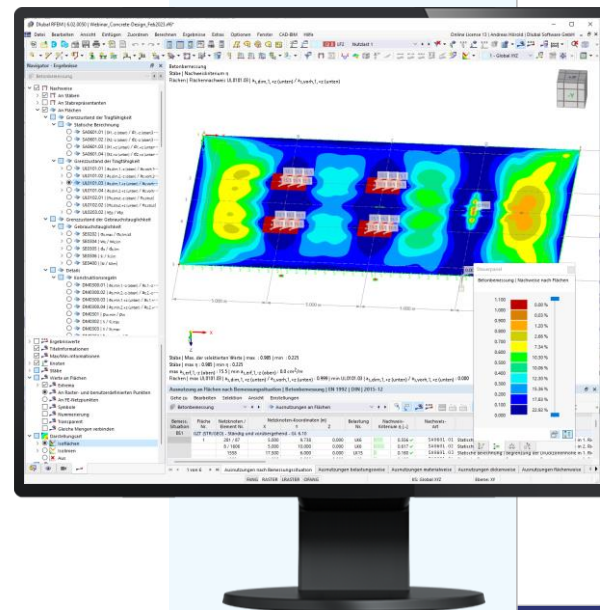
**Dipl.-Ing. (FH) Adrian Langhammer**  
Co-Organizer

Product Engineering & Customer Support  
Dlubal Software GmbH



**Webinar**

# New Features of Concrete Design Add-On for RFEM 6 and RSTAB 9



# Questions During the Presentation



GoToWebinar Control Panel  
**Desktop**



E-mail: [info@dlubal.com](mailto:info@dlubal.com)



Show or hide control panel



The screenshot shows the GoToWebinar control panel interface. At the top, there is a menu bar with 'File', 'View', and 'Help'. Below it is the 'Audio' section, which includes a 'Sound Check' indicator with a green bar and a question mark. There are two radio buttons: 'Computer audio' (selected) and 'Phone call'. A red 'MUTED' indicator is visible. Below this, there are dropdown menus for 'Mikrofon (2- Sennheiser USB h...)' and 'Lautsprecher (2- Sennheiser U...'. A volume slider is also present. The 'Questions' section is below the audio settings, featuring a text input field with the placeholder '[Enter a question for staff]' and a 'Send' button. At the bottom, the 'Webinar ID: 373-901-987' and the 'GoToWebinar' logo are displayed.



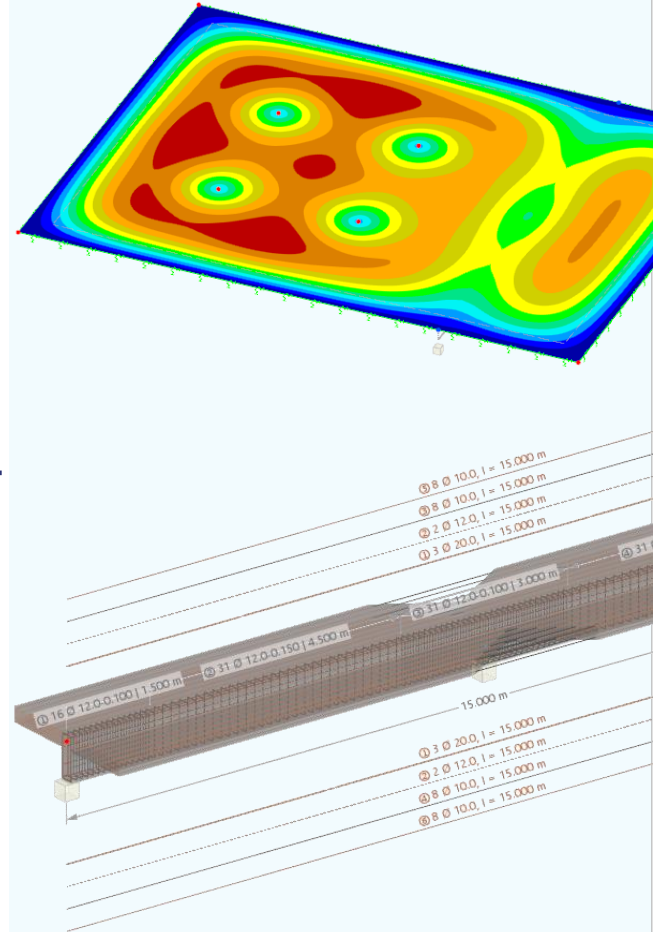
Adjust audio settings

Ask questions



# CONTENT

- 01** Input of a model for design in the Concrete Design add-on
- 02** Presentation of the most important new features of the add-on from the last months of development
- 03** Outlook on further development and new features





# New Features in Concrete Design Add-On

- Automatic function of surface reinforcement
- Determination of required reinforcement of members for SLS
- Design with member and member set representatives
- Multi-edit of reinforcement for members/member sets
- Print function of input reinforcement
- Design of shear joint
- ...

For more information, visit our [website](#) or the "Development" section of the [Dlubal Extranet](#)

## Mein Konto

| RFEM Version | Release Date  | Feature ID | Subject   | Add-on Product  | Product Area                          |
|--------------|---------------|------------|---|-----------------|---------------------------------------|
| 6.02.0044    | Di 27.12.2022 | 11471      | Bemessung von Stäben - Erforderliche Bewehrung für den GZG ( $A_{s,min}$ , $A_{s,lim}$ und $S_{lim}$ )        | Concrete Design | 21.07 Concrete Design - Design Checks |
| 6.02.0042    | Mo 12.12.2022 | 11188      | Grenzdehnungsangaben in Stahlfaserbetonmaterialien  | Concrete Design | 01.01 Basic - Materials               |
| 6.02.0042    | Mo 12.12.2022 | 11162      | Mehrfachbearbeitung der Stabbewehrung   | Concrete Design | 21.04 Concrete Design - Calculation   |
| 6.02.0042    | Mo 12.12.2022 | 10886      | Auslegung der Flächenbewehrung  | Concrete Design | 21.04 Concrete Design - Calculation   |
| 6.02.0042    | Mo 12.12.2022 | 10583      | Umsetzung des Nationalen Anhangs von Irland IS EN 1992-1-1:2004/NA:2010/AC2:2020                              | Concrete Design | 21.04 Concrete Design - Calculation   |
| 6.02.0037    | Mo 07.11.2022 | 10969      | WebServices: Betonbemessungskonfigurationen   | Concrete Design | 81.01 Webservice - Core               |
| 6.02.0035    | Di 25.10.2022 | 10839      | Implementierung des nationalen Anhangs von Estland EU-EN 1992-1-1:2005+A1:2015/NA:2015 einschließlich AC:2021 | Concrete Design | 21.04 Concrete Design - Calculation   |
| 6.02.0035    | Di 25.10.2022 | 10807      | Implementierung des nationalen Anhangs von Mazedonien MKC EN 1992-1-1/HA:2020                                 | Concrete Design | 21.04 Concrete Design - Calculation   |
| 6.02.0034    | Di 18.10.2022 | 10867      | Ergebnis-Navigator   Detailergebnisse für ACI und CSA   | Concrete Design | 21.04 Concrete Design - Calculation   |
| 6.02.0034    | Di 18.10.2022 | 10734      | Nationaler Anhang von Luxemburg   ILMAS LNAS-EN 1992-1-1:2004+A1:2014/AN-LU:2020.                             | Concrete Design | 21.04 Concrete Design - Calculation   |



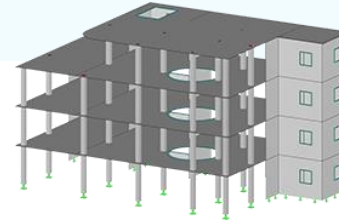
# Upcoming Features in Concrete Design Add-On

- Determination of required reinforcement of surfaces in SLS
- Nonlinear calculation
- Merge of shear and punching shear reinforcement into one result graphic
- Fire resistance design according to EC 2
- Seismic design of concrete components according to EC 8
- Design of RSECTION cross-sections
- Design of steel fiber reinforced concrete
- Automatic function for member reinforcement
- Multi-legged stirrup definition in both cross-section axes
- Fatigue design according to EC 2
- ...



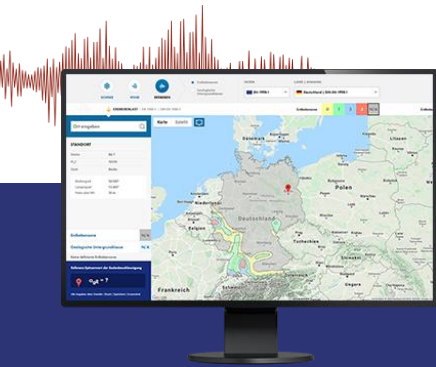


# Free Online Services



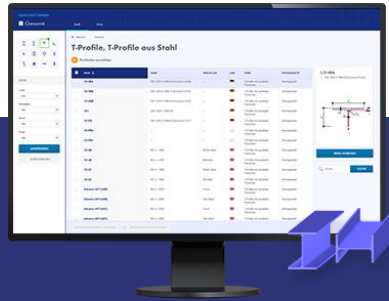
## Geo-Zone Tool

Dlubal Software provides an online tool with snow, wind and seismic zone maps.



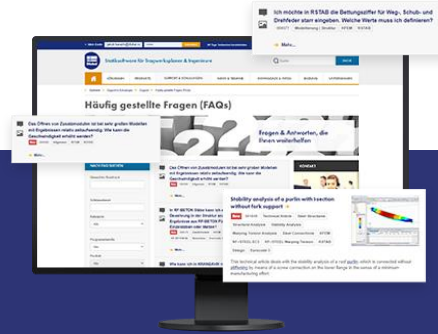
## Cross-Section Properties

With this free online tool, you can select standardized sections from an extensive section library, define parametrized cross-sections and calculate its cross-section properties.



## FAQs & Knowledge Base

Access frequently asked questions commonly submitted to our customer support team and view helpful tips and tricks articles to improve your work.



## Models to Download

Download numerous example files here that will help you to get started and become familiar with the Dlubal programs.





# Free Online Services

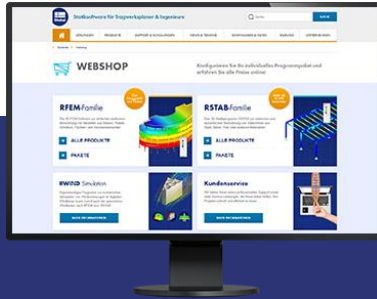
## Youtube Channel - Webinars, Videos

Videos and webinars about the structural engineering software.



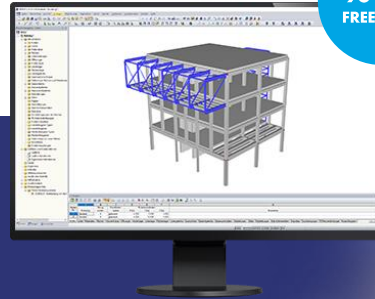
## Webshop with Prices

Configure your individual program package and get all prices online!



## Trial Licenses

The best way how to learn using our programs is to simply test them for yourself. Download a 90-day free trial version of our structural analysis & design software.



We offer free support via email and chat





# — Get Further Details About Dlubal



Visit website  
[www.dlubal.com](http://www.dlubal.com)

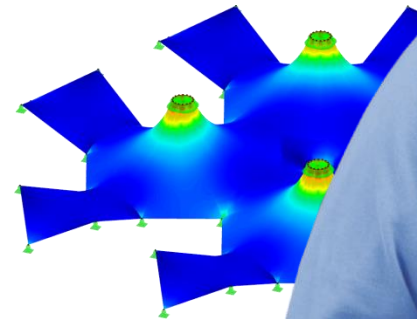
- Videos and recorded webinars
- Newsletters
- Events and conferences
- Knowledge Base articles



See Dlubal  
Software in  
action in a  
webinar



Download  
free trial  
license



**Dlubal Software GmbH**  
Am Zellweg 2,  
93464 Tiefenbach, Germany

Phone: +49 9673 9203-0  
E-mail: [info@dlubal.com](mailto:info@dlubal.com)



[www.dlubal.com](http://www.dlubal.com)