



Structural Analysis & Design Software

www.dlubal.com



Dipl.-Ing. (FH) Andreas Hörold
Organizer

Marketing & Public Relations
Dlubal Software GmbH



Stefan Hoffmann, M.Sc.
Co-Organizer

Product Engineering & Customer Support
Dlubal Software GmbH

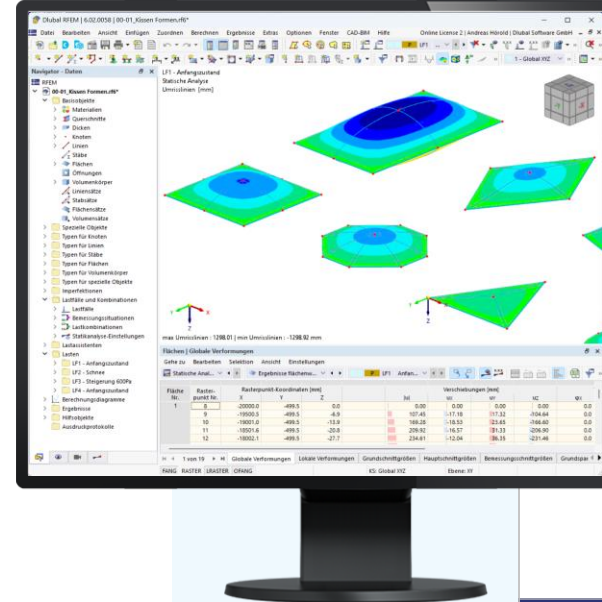


Dipl.-Ing. (FH) Jürgen Theilmann, M.Eng.
Co-Organizer

Customer Support
Dlubal Software GmbH

Webinar

Form-Finding and Calculation of Pneumatic Membrane Structures in RFEM 6



Questions During the Presentation



GoToWebinar Control Panel
Desktop



E-mail: info@dlubal.com



Show or hide control panel



The screenshot shows the GoToWebinar control panel interface. At the top, there is a menu bar with 'File', 'View', and 'Help'. Below it is the 'Audio' section, which includes a 'Sound Check' indicator with a green bar and a question mark. There are two radio buttons: 'Computer audio' (selected) and 'Phone call'. A red 'MUTED' indicator is visible. Below this, there are dropdown menus for 'Mikrofon (2- Sennheiser USB h...)' and 'Lautsprecher (2- Sennheiser U...'. A volume slider is also present. The 'Questions' section is below the audio settings, featuring a text input field with the placeholder '[Enter a question for staff]' and a 'Send' button. At the bottom, the 'Webinar ID: 373-901-987' and the 'GoToWebinar' logo are displayed.



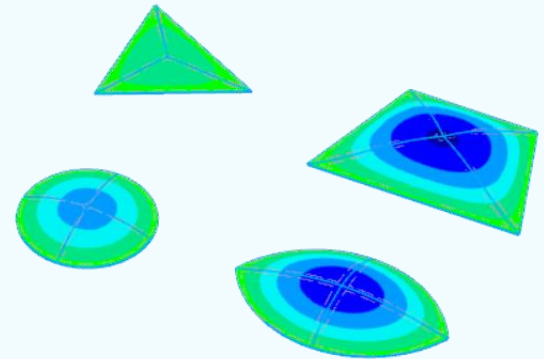
Adjust audio settings

Ask questions



CONTENT

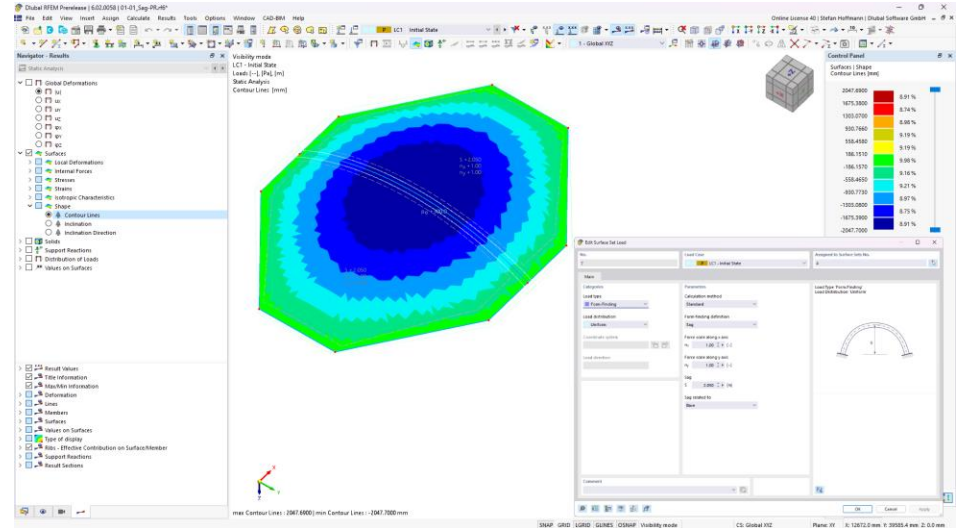
- 01 Overview of the new features in Form-Finding
- 02 Modeling of a pneumatical system
- 03 Wind Analysis and generation of wind loads
- 04 Design of the supporting structure
- 05 Prospect





Overview

- Surface Load- Sag (pre-release version)
- Ponding Load (pre-release version)
- Difference Results
- Set of members - Loads



Reference Example

Beispiel 3.8

Es wird ein Folienkissen mit einer Spannweite von 4 m und einer Länge von 12 m betrachtet, und für die Berechnung der Spannungen und Verformungen wird in der Mitte des Kissens ein Streifen mit 1 m Breite herausgeschnitten. Mit einer geringen Spannung in Richtung der langen Seite ist der mittlere Bereich einachsrig gekrümmt und weist einen homogenen und anisotropen Spannungszustand auf, vgl. Abb. 2-107.

Das Eigengewicht der Membran mit ca. 0,01 kN/m² wird für die nachfolgenden Berechnungen vernachlässigt. Die Windbelastung wird vereinfachend als konstant über die Breite angenommen, zum Beispiel für ein Kissen aus dem mittleren Bereich einer größeren Dachfläche. Schnee und Windbelastungen gelten für Karlsruhe unter 400 m ü. NN.

Charakteristische Einwirkungen

Innendruck	$p_{i,k} = 0,3 \text{ kN/m}^2$
Schnee	$s_k = 0,52 \text{ kN/m}^2$
Windsog	$w_{s,k} = -1,2 \cdot 0,65 \text{ kN/m}^2$ $= -0,78 \text{ kN/m}^2$

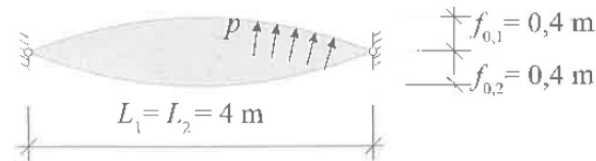
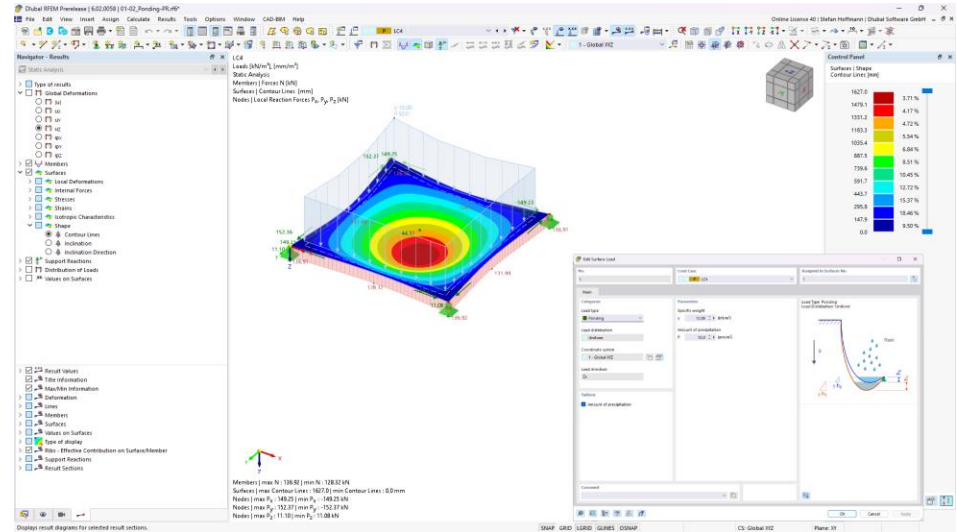


Abb. 3-230: Geometrie und Belastung



Prospect

- Release of Surface Load- Sag
- Release of Ponding Load
- Development of Cutting-Patterns



Book Your Live Presentation at BAU 2023

Secure Your Free Ticket!



Your Advantages

- You get a live product demonstration, showing the latest developments in our structural analysis programs
- You can benefit from the long-standing know-how of absolute experts in the areas of reinforced concrete structures, steel structures, timber structures, dynamic analysis, and FEM calculations
- You receive a free admission ticket



➔ **Book Live Demo**

Book your free Online Appointment!

Get valuable insights from one of our experts



**Dipl.-Ing. (FH) Dipl.-
WirtschaftsIng. (FH)
Christian Stautner**

Head of Sales



Bastian Ackermann, M.Sc.

Sales



Daniel Dlubal, M.Sc.

COO of Dlubal Software GmbH



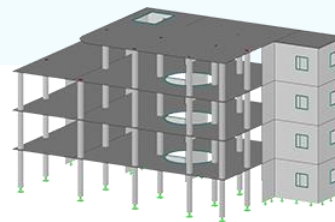
**Dipl.-Ing. (FH) Michael
Hansen**

Sales & Marketing



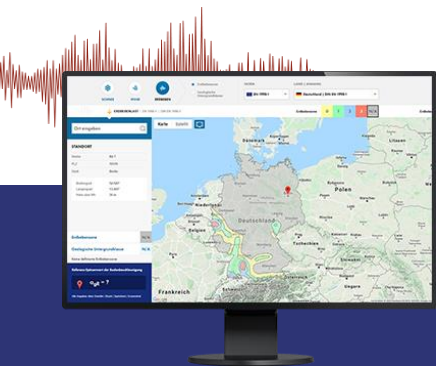


Free Online Services



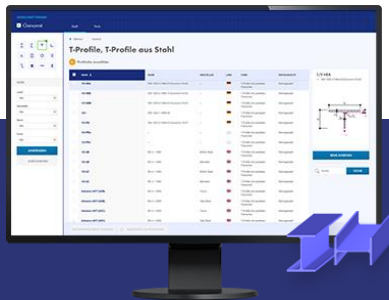
Geo-Zone Tool

Dlubal Software provides an online tool with snow, wind and seismic zone maps.



Cross-Section Properties

With this free online tool, you can select standardized sections from an extensive section library, define parametrized cross-sections and calculate its cross-section properties.



FAQs & Knowledge Base

Access frequently asked questions commonly submitted to our customer support team and view helpful tips and tricks articles to improve your work.



Models to Download

Download numerous example files here that will help you to get started and become familiar with the Dlubal programs.





Free Online Services

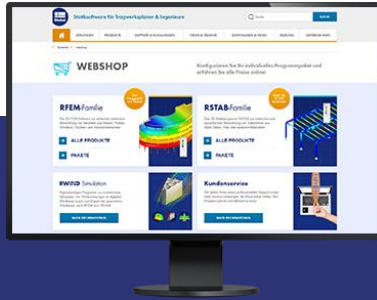
Youtube Channel - Webinars, Videos

Videos and webinars about the structural engineering software.



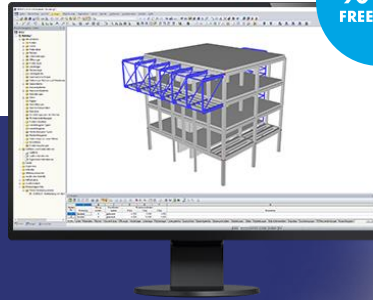
Webshop with Prices

Configure your individual program package and get all prices online!



Trial Licenses

The best way how to learn using our programs is to simply test them for yourself. Download a 90-day free trial version of our structural analysis & design software.



We offer free support via email and chat



— Get Further Details About Dlubal



Visit website

www.dlubal.com

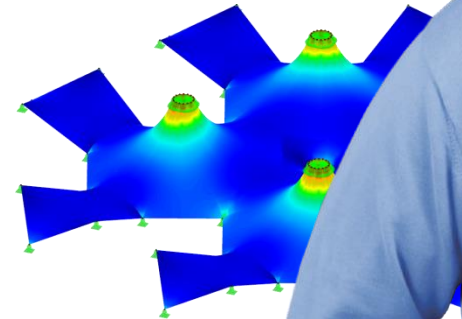
- Videos and recorded webinars
- Newsletters
- Events and conferences
- Knowledge Base articles



See Dlubal Software in action in a webinar



Download free trial license



Dlubal Software GmbH
Am Zellweg 2,
93464 Tiefenbach, Germany

Phone: +49 9673 9203-0
E-mail: info@dlubal.com



www.dlubal.com