

## Transfer Softlock with RUS Tool Server 2 Server

Install the dongle driver on the new server. You can download the driver here:

[http://download.dlubal.com/?file=Sentinel\\_LDK\\_GUI\\_setup.zip](http://download.dlubal.com/?file=Sentinel_LDK_GUI_setup.zip)

Please download the [haspvlib\\_48521.dll](#) and copy it on the new Server (Recipient) in the folder:

C:\Program Files (x86)\Common Files\Aladdin Shared\HASP

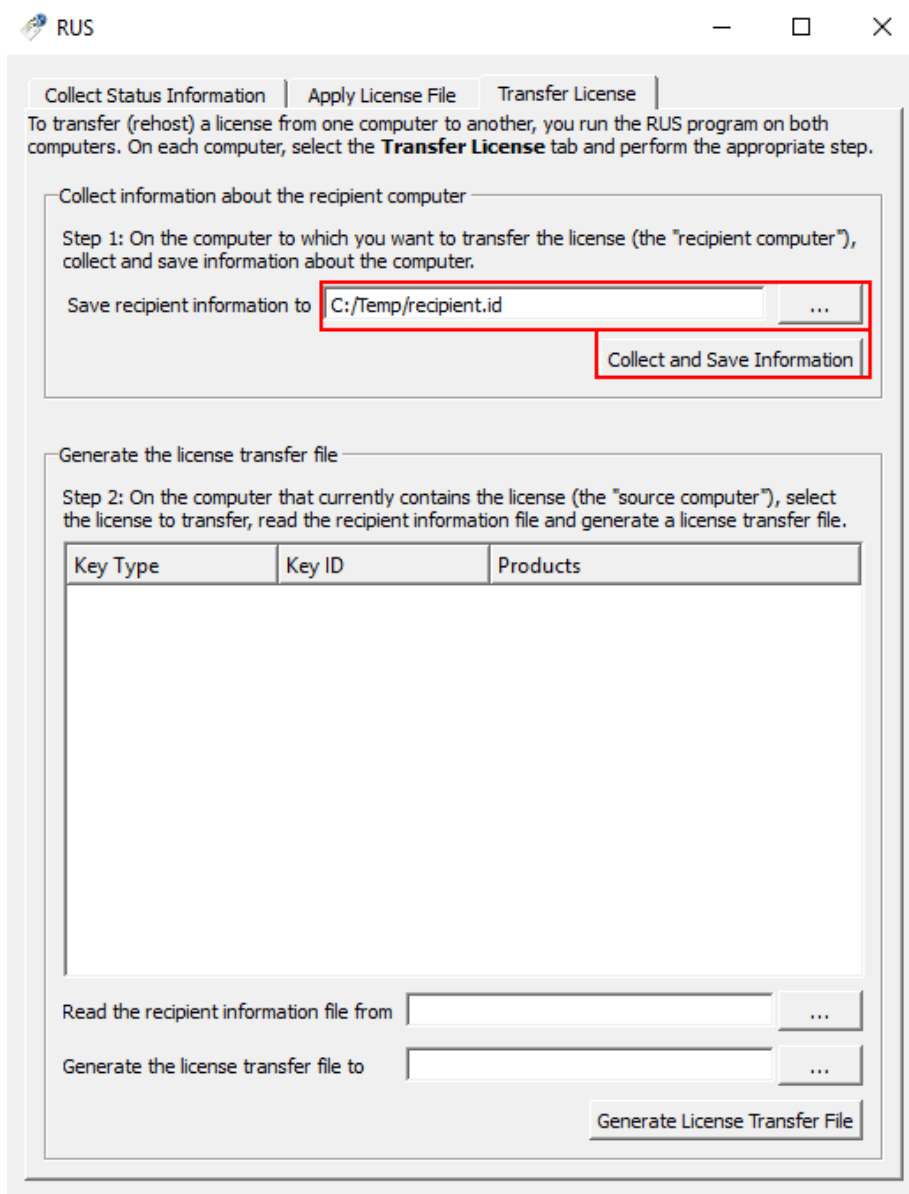
Please download the RUS tool:

<http://download.dlubal.com/?file=RUS.exe>

Target PC = NEW PC

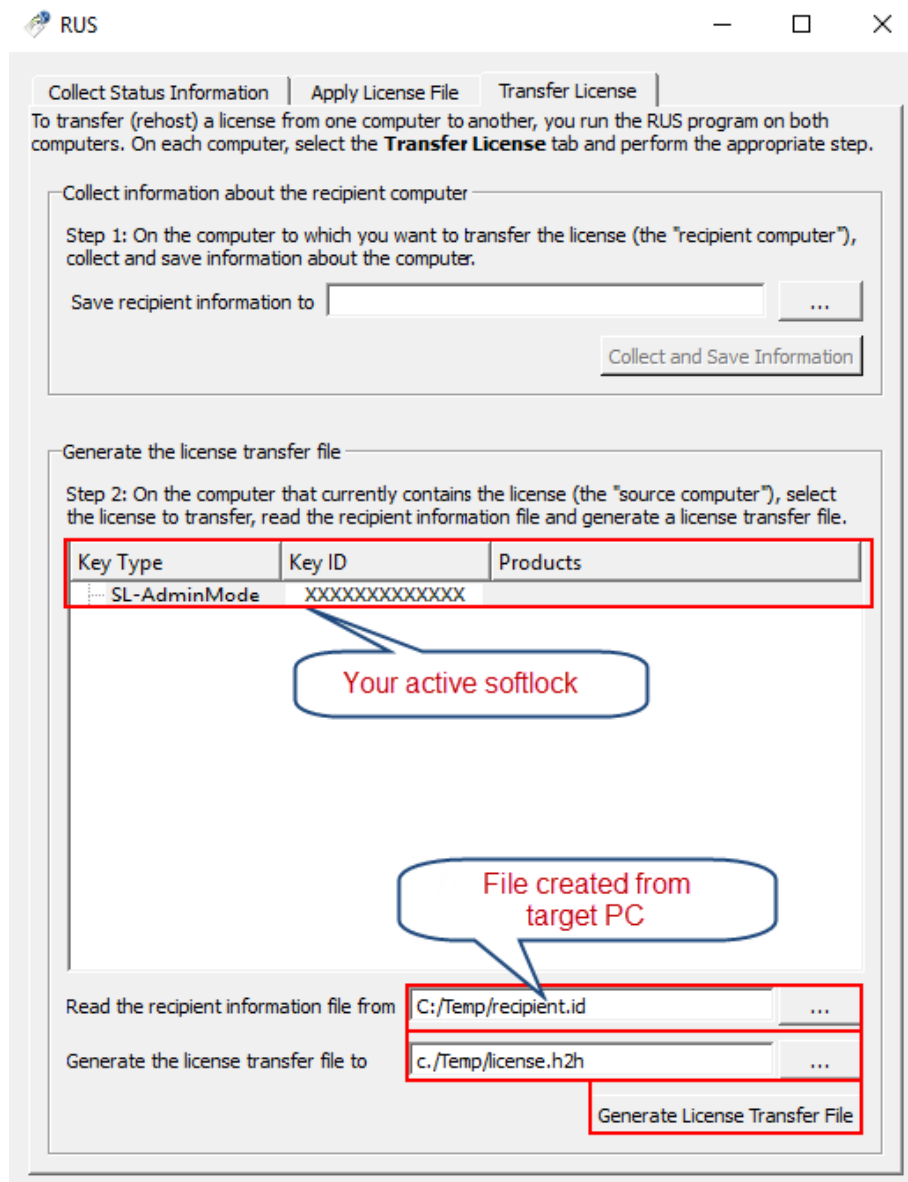
Source PC = OLD PC (with active Softlock)

1. Run tool RUS.exe on the **target PC**. Select the tab *Transfer License* in the RUS dialog box.



2. Specify path of the output \*.id file with recipient information. Then click on the button *Collect and Save Information*.

3. Run tool RUS.exe on the **source PC** and select the tab *Transfer License*.



4. Select the SL license you want to transfer.
5. Read the recipient information file (\*.id). Specify the location of the output license transfer file (\*.h2h). Then click on the button *Generate License Transfer File*.
6. Run tool RUS.exe on the target PC. Open the tab *Apply License File*.
7. Upload the license transfer file (\*.h2h). Click on the button *Apply Update*.
8. Now you can run the Dlubal Software on each client and import the current **author.ini** file (also possible in DEMO mode) by using the *Help > Authorization* menu. After restarting the software, you can use it as a full version.

Your team from DLUBAL SOFTWARE GMBH