



# Structural Analysis & Design Software

[www.dlubal.com](http://www.dlubal.com)



**Dipl.-Ing. (FH) Andreas Hörold**  
Organizer

Marketing & Public Relations  
Dlupal Software GmbH



**Dipl.-Ing. (FH) Lukas Sühnel**  
Co-Organizer

Product Engineering & Customer Support  
Dlupal Software GmbH

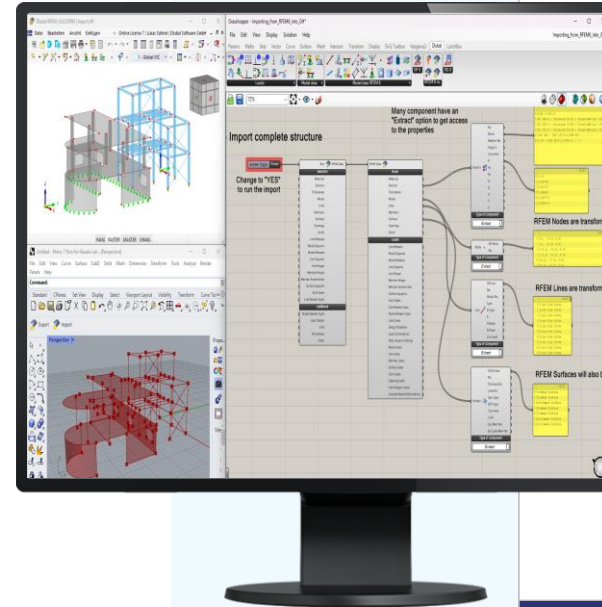


**Paul Sivolgin, B.Eng.**  
Co-Organizer

Product Engineering  
Dlupal Software GmbH

## Webinar

# Grasshopper and RFEM 6: News, Tips & Tricks



# Questions During the Presentation



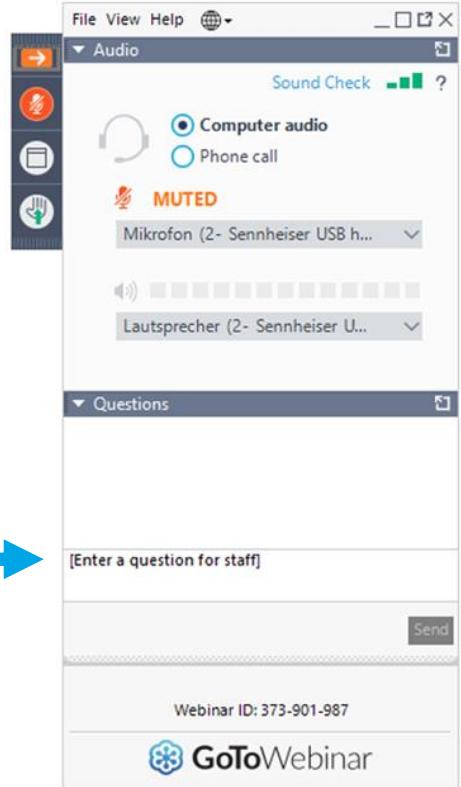
GoToWebinar Control Panel  
**Desktop**



E-mail: [info@dlubal.com](mailto:info@dlubal.com)



Show or hide control panel



Adjust audio settings

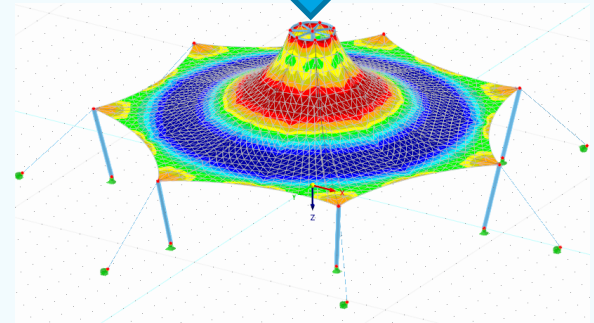
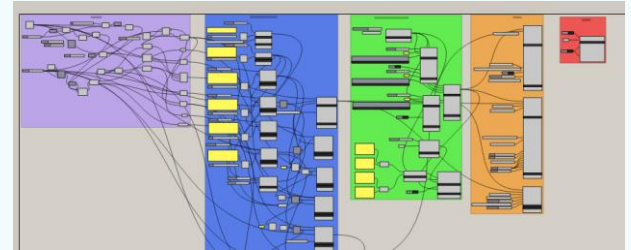


Ask questions



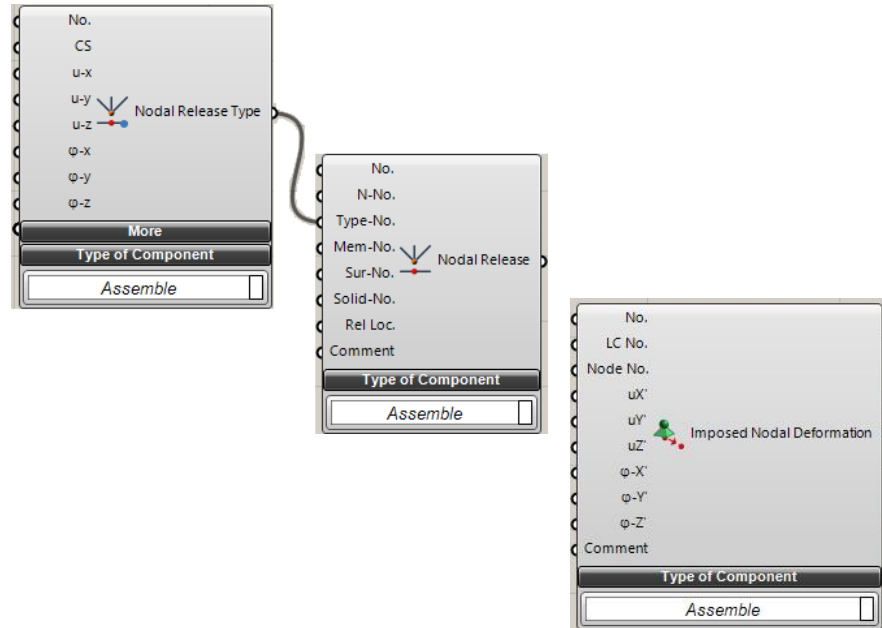
# Content

- 01 New features of the GH interface
- 02 Inclusion of existing RFEM 6 objects in the GH modeling
- 03 Import from RFEM 6 into GH
- 04 Modification of RFEM 6 structures using GH
- 05 First attempt: Calculation loop using Galapagos



# New features of the GH interface

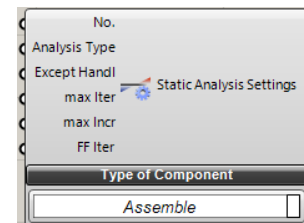
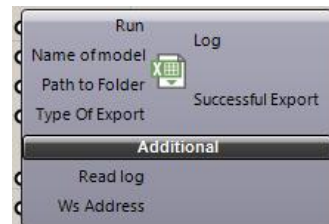
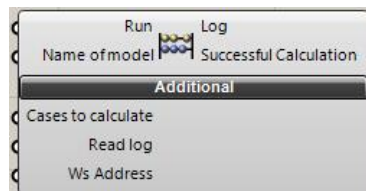
- Dependency on Webservice license removed
- New components for nodal releases
- New component for imposed nodal deformation





# New features of the GH interface

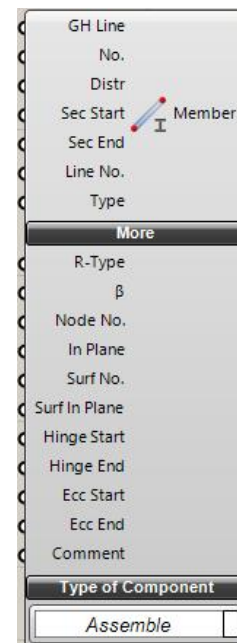
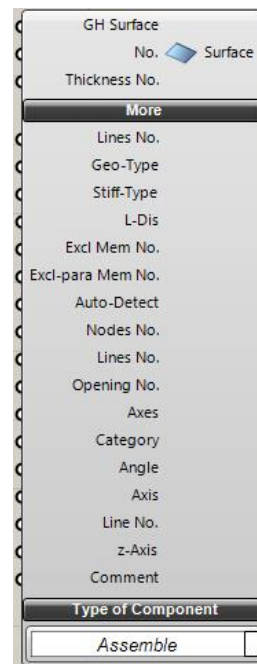
- New component for starting the calculation in RFEM 6
- New component for exporting the results to CSV or XML file
- Extension of the static analysis settings: Number of iterations, load increments and FF iterations





# New features of the GH interface

- Extension of the surface component: Control of the local axis system as well as the integrated objects
- Extensions of the member component: Member rotation via surface





# Book your free Online Appointment!

Get valuable insights from one of our experts



**Dipl.-Ing. (FH) Dipl.-  
WirtschaftsIng. (FH)  
Christian Stautner**

Head of Sales



**Bastian Ackermann, M.Sc.**

Sales



**Daniel Dlubal, M.Sc.**

COO of Dlubal Software GmbH



**Dipl.-Ing. (FH) Michael  
Hansen**

Sales & Marketing

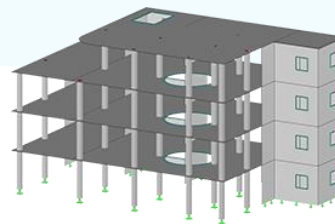


**→ Contact Our Sales Team**



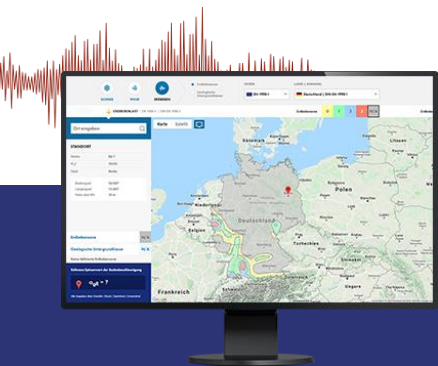


# Free Online Services



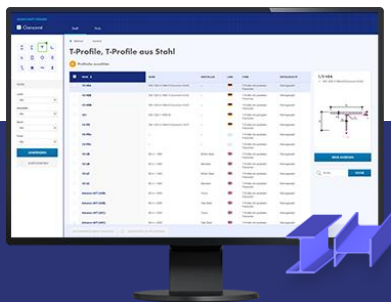
## Geo-Zone Tool

Dlubal Software provides an online tool with snow, wind and seismic zone maps.



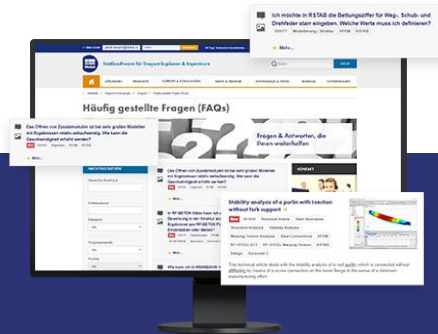
## Cross-Section Properties

With this free online tool, you can select standardized sections from an extensive section library, define parametrized cross-sections and calculate its cross-section properties.



## FAQs & Knowledge Base

Access frequently asked questions commonly submitted to our customer support team and view helpful tips and tricks articles to improve your work.



## Models to Download

Download numerous example files here that will help you to get started and become familiar with the Dlubal programs.





# Free Online Services

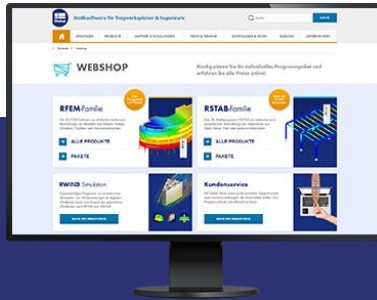
## Youtube Channel - Webinars, Videos

Videos and webinars about the structural engineering software.



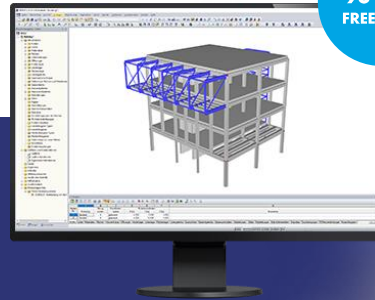
## Webshop with Prices

Configure your individual program package and get all prices online!



## Trial Licenses

The best way how to learn using our programs is to simply test them for yourself. Download a 90-day free trial version of our structural analysis & design software.



90-DAY FREE TRIAL



We offer free support via email and chat



# — Get Further Details About Dlubal



Visit website  
[www.dlubal.com](http://www.dlubal.com)

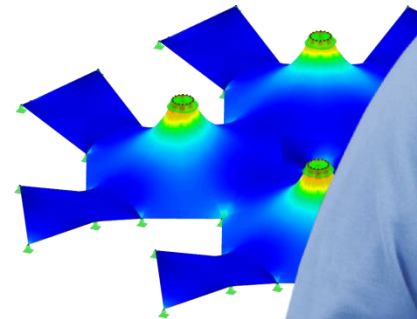
- Videos and recorded webinars
- Newsletters
- Events and conferences
- Knowledge Base articles



See Dlubal Software in action in a webinar



Download free trial license



**Dlubal Software GmbH**  
Am Zellweg 2,  
93464 Tiefenbach, Germany

Phone: +49 9673 9203-0  
E-mail: [info@dlubal.com](mailto:info@dlubal.com)



[www.dlubal.com](http://www.dlubal.com)