



# **Structural Analysis & Design Software**

[www.dlubal.com](http://www.dlubal.com)



**Dipl.-Ing. (FH) Andreas Hörold**  
Organizer

Marketing & Public Relations  
Dlubal Software GmbH

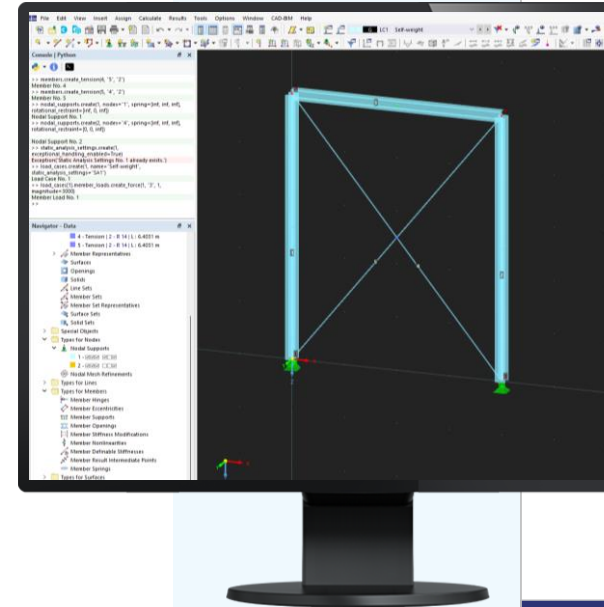


**Dipl.-Ing. Rebecca Göbel**  
Co-Organizer

Product Engineering  
Dlubal Software GmbH

## Webinar

# Using Python Console in RFEM 6



# Questions During the Presentation



GoToWebinar Control Panel  
**Desktop**



E-mail: **info@dlubal.com**



**Ask questions**

Questions

No questions yet

Question from your attendees will appear here.

Submit a question

Enter your question

Your question will be sent to the staff

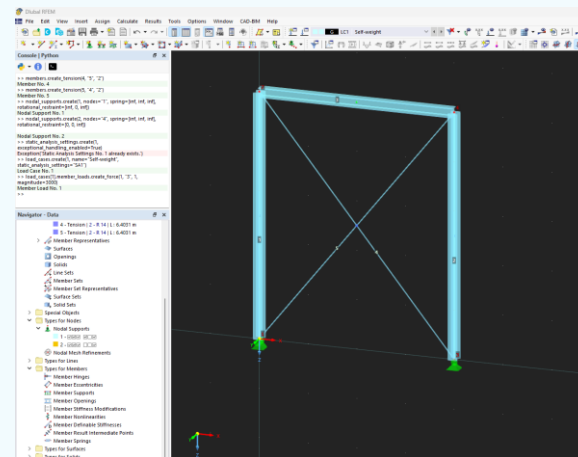
Send

**Adjust audio settings**



# CONTENT

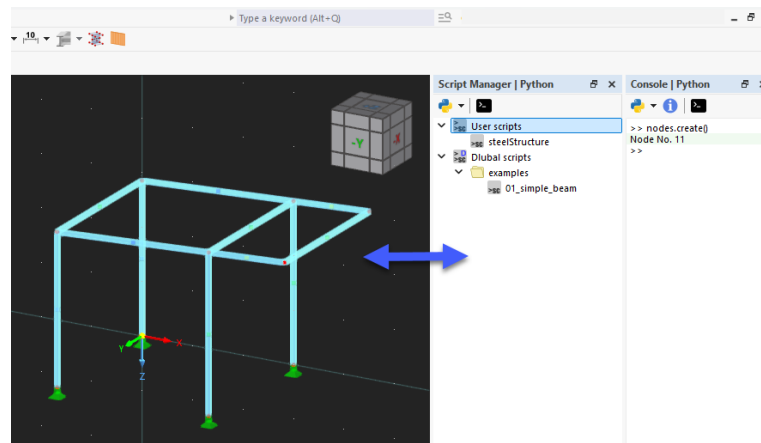
- 01 In-App Scripting and Console
- 02 Difference between Webservice and Python Console
- 03 Model Export as Python Script
- 04 Examples





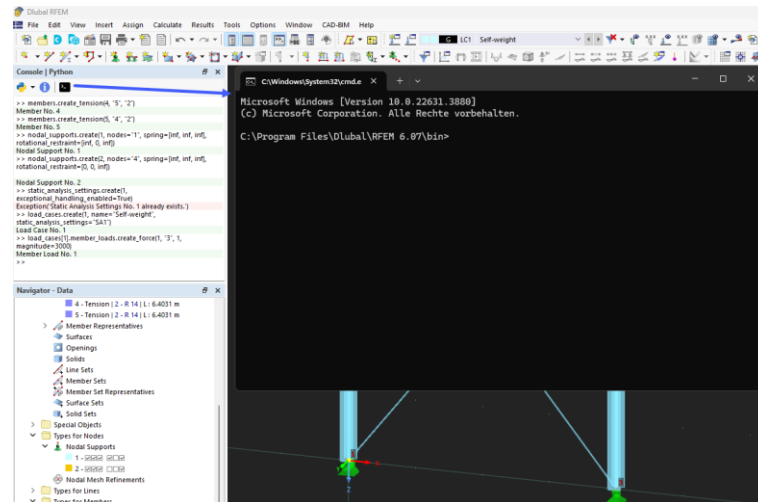
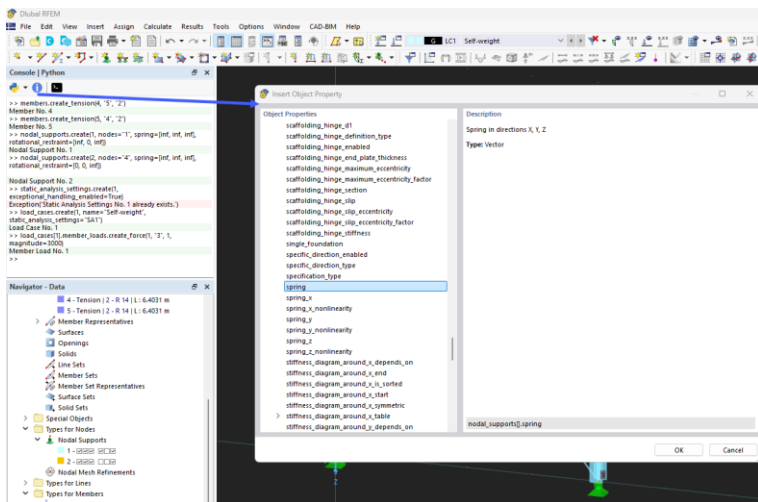
# What is In-App-Scripting and the Console?

- In-App-Scripting
  - Parametrization of Models
  - Automation of Tasks
  - Retrieval of Information
- Console
  - Creation of Geometry and Loading
  - Retrieval of Information
  - Usage of external Libraries



# Python Console

- Information about commands and properties in info box
- Installation of external libraries



# Webservice vs. Python Console

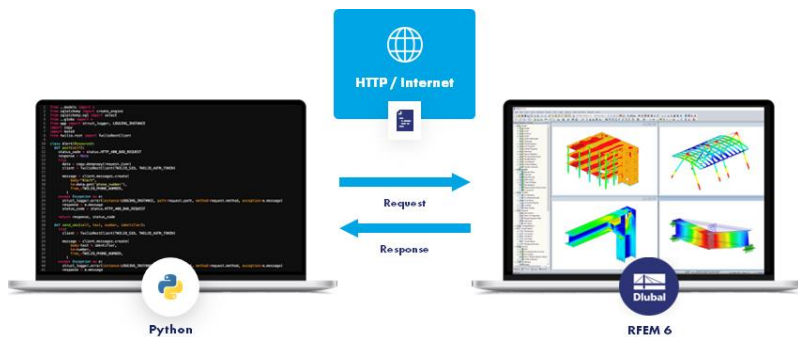
## Webservice

- Communication via webserver
- Internet connection needed



## Python Console

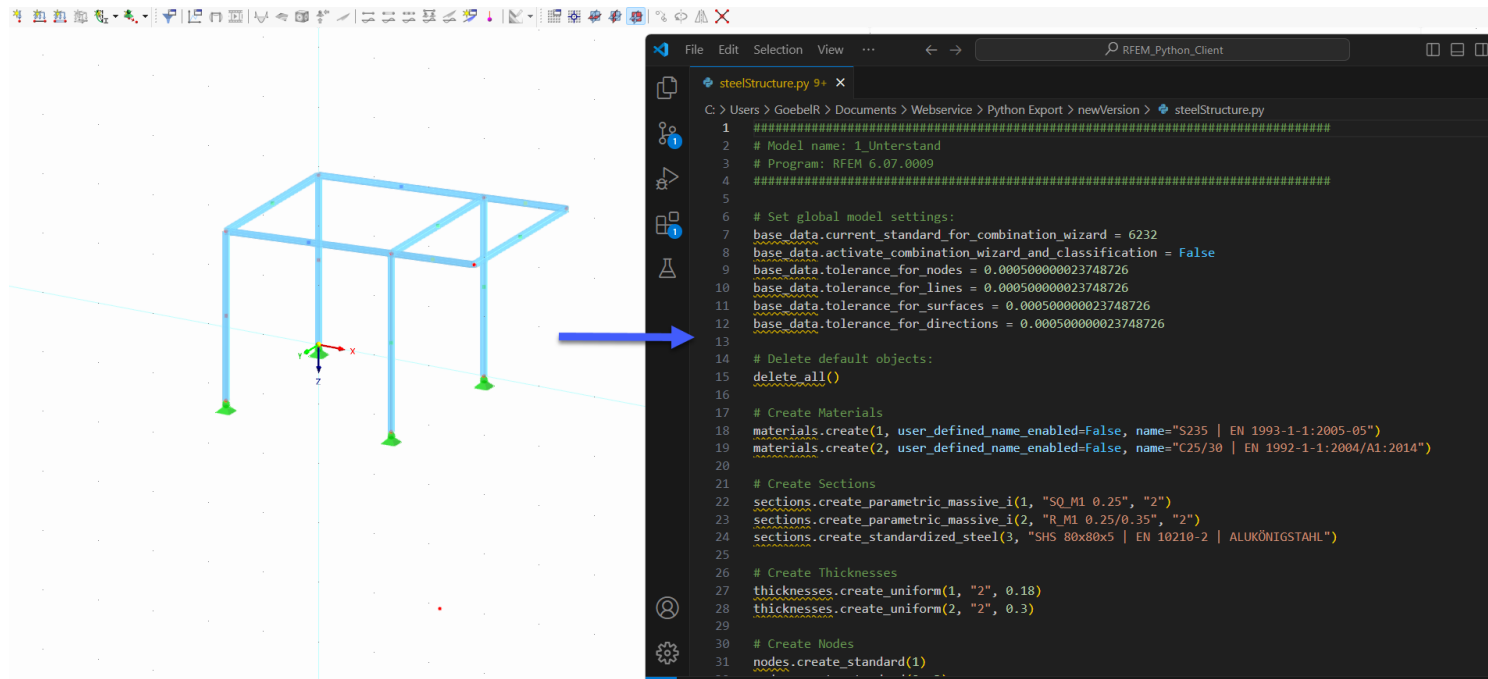
- Direct communication
- Usable without internet connection
  - Different Syntax
- No programming environment needed



```

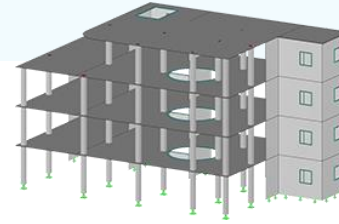
Console | Python
>> members.create_tension(4, '5', '2')
Member No. 4
>> members.create_tension(5, '4', '2')
Member No. 5
>> nodal_supports.create(1, nodes='1', spring=[inf, inf, inf],
rotational_restraint=[inf, 0, inf])
Nodal Support No. 1
>> nodal_supports.create(2, nodes='4', spring=[inf, inf, inf],
rotational_restraint=[0, 0, inf])
Nodal Support No. 2
>> static_analysis_settings.create(1,
exceptional_handling_enabled=True)
Exception(Static Analysis Settings No. 1 already exists.)
>> load_cases.create(1, name='Self-weight',
static_analysis_settings='SA1')
Load Case No. 1
>> load_cases(1).member_loads.create_force(1, '3', 1,
magnitude=3000)
Member Load No. 1
>>
  
```

# Export to Python Script





# Free Online Services



## Geo-Zone Tool

Dlubal Software provides an online tool with snow, wind and seismic zone maps.

## Cross-Section Properties

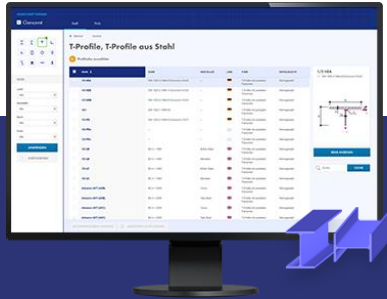
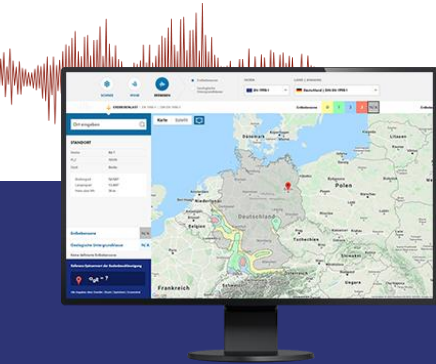
With this free online tool, you can select standardized sections from an extensive section library, define parametrized cross-sections and calculate its cross-section properties.

## FAQs & Knowledge Base

Access frequently asked questions commonly submitted to our customer support team and view helpful tips and tricks articles to improve your work.

## Models to Download

Download numerous example files here that will help you to get started and become familiar with the Dlubal programs.



# Free Online Services

## Youtube Channel - Webinars, Videos

Videos and webinars about the structural engineering software.



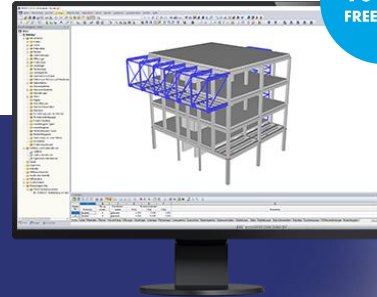
## Webshop with Prices

Configure your individual program package and get all prices online!



## Trial Licenses

The best way how to learn using our programs is to simply test them for yourself. Download a 90-day free trial version of our structural analysis & design software.



We offer free support via email and chat



90-DAY  
FREE TRIAL

# — Get Further Details About Dlubal



Visit website  
[www.dlubal.com](http://www.dlubal.com)

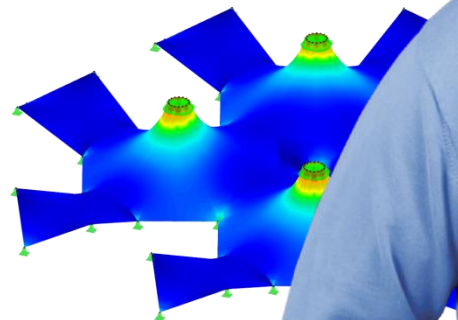
- Videos and recorded webinars
- Newsletters
- Events and conferences
- Knowledge Base articles



See Dlubal  
Software in  
action in a  
webinar



Download  
free trial  
license



**Dlubal Software GmbH**  
Am Zellweg 2,  
93464 Tiefenbach, Germany

Phone: +49 9673 9203-0  
E-mail: [info@dlubal.com](mailto:info@dlubal.com)



[www.dlubal.com](http://www.dlubal.com)