



# Software für Statik und Dynamik

[www.dlubal.com](http://www.dlubal.com)

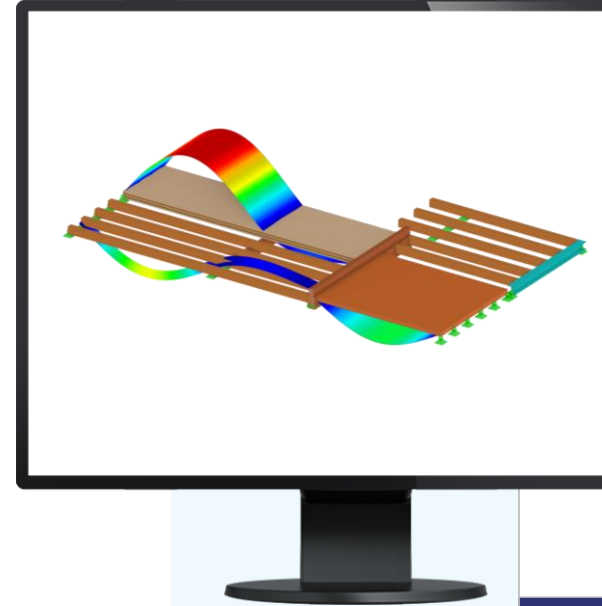


**Dipl.-Ing. (FH) Gerhard Rehm**  
Organisator

Product Engineering & Customer Support  
Dlubal Software GmbH

Introduction to Timber Design

# RFEM 6 für Studenten



# Questions During the Presentation



GoToWebinar Control Panel  
**Desktop**



2

Adjust audio settings

Questions

No questions yet

Question from your attendees will appear here.

Submit a question

Enter your question

Your question will be sent to the staff

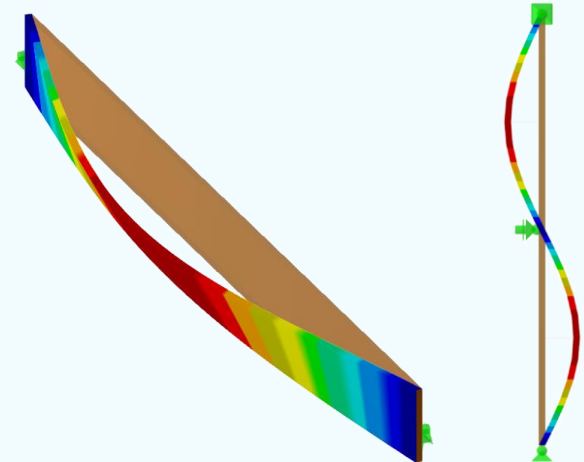
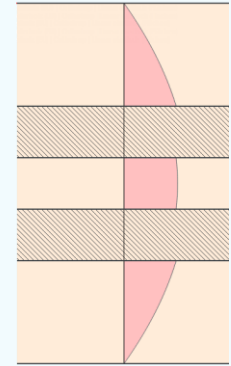
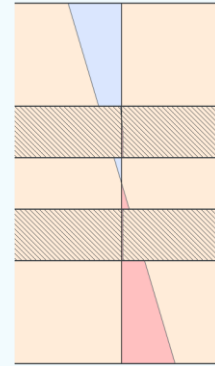
Send

Ask questions



# CONTENT

- 01 Overview Timber Design RFEM 6
- 02 Example 1: Stress Checks - Floor
- 03 Example 2: Flexural-Buckling - Column
- 04 Example 3: Lateral-Torsional-Buckling - Girder
- 05 Example 4: CLT Design



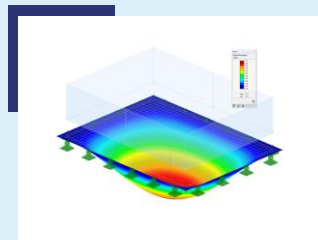


# Products for Design according to Eurocode 5



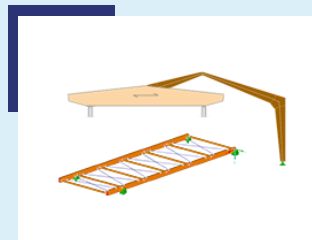
## Timber Design

- Add-on | RFEM/RSTAB
- Design of timber members and sets of members



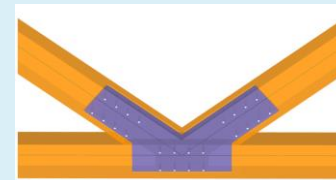
## Multilayer Surfaces

- Add-on Module | RFEM
- Design of laminate surfaces



## RX-TIMBER

- Standalone programs
- Glulam, frame, purlin, bracing, continuous beam, roof



## RF-JOINTS Timber

- Add-on Module | RFEM/RSTAB
- Steel to timber
- Timber to timber



More information:  
[www.dlubal.com](http://www.dlubal.com)

# For Students The Future Engineers

Start your Career at Dlubal  
Software in Tiefenbach,  
Leipzig or Munich

[TO THE CAREER PAGE](#)





[www.dlubal.com](http://www.dlubal.com)