



# Structural Analysis & Design Software



[www.dlubal.com](http://www.dlubal.com)



**Amy Heilig, PE**  
Presenter

CEO - USA Office



**Alex Bacon, EIT**  
Moderator

Technical Support Engineer



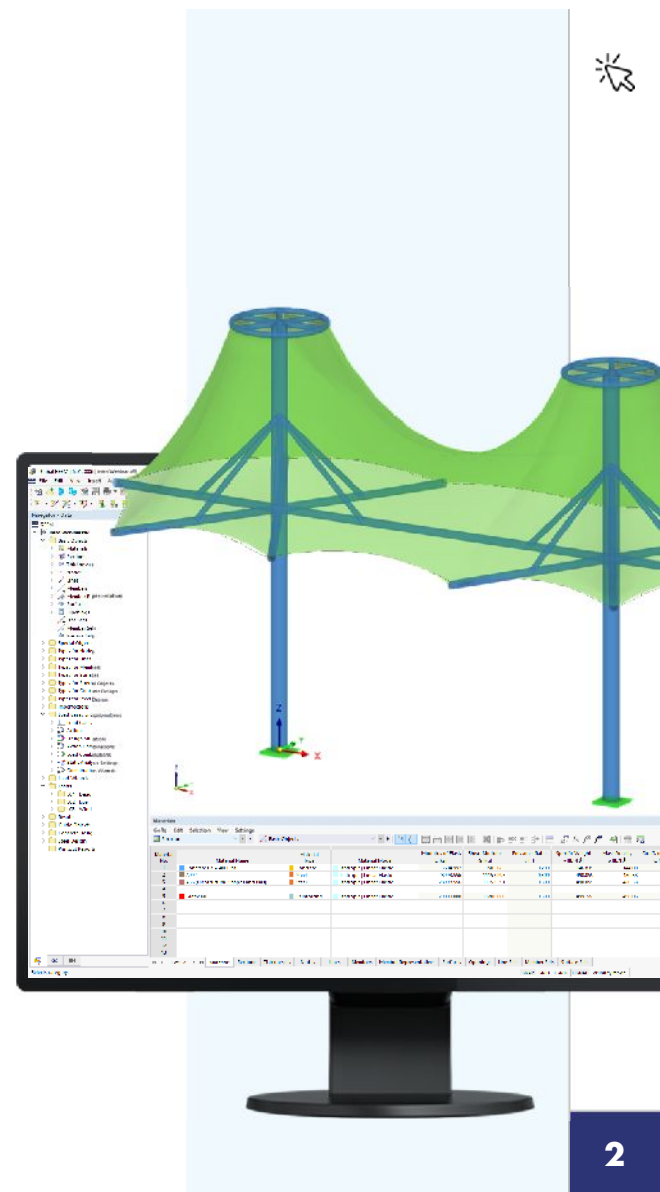
**Cisca Tjoa, PE**  
Moderator

Technical Support Engineer



Webinar

# Fabric Tensile Structures in RFEM 6



# Questions During the Presentation

GoToWebinar Control Panel Desktop

Email: [info-us@dlubal.com](mailto:info-us@dlubal.com)



The screenshot shows the GoToWebinar control panel interface. It includes a menu bar with 'File', 'View', and 'Help'. Below the menu bar are three tabs: 'Audio', 'Questions', and 'Muted'. The 'Audio' tab is active, showing 'Sound Check' with a signal strength indicator, 'Computer audio' selected, 'Phone call' unselected, and a 'MUTED' status. Below this, there are dropdown menus for 'Mikrofon (2- Sennheiser USB h...' and 'Lautsprecher (2- Sennheiser U...'. A volume slider is also visible. The 'Questions' tab is also visible, showing a text input field with the placeholder '[Enter a question for staff]' and a 'Send' button. At the bottom, the 'Webinar ID: 373-901-987' and the 'GoToWebinar' logo are displayed. Three callout boxes with arrows point to specific features: 'Show or hide control panel' points to the top-left corner of the control panel; 'Adjust audio settings' points to the 'Audio' tab; and 'Ask questions' points to the text input field in the 'Questions' tab.



# CONTENT

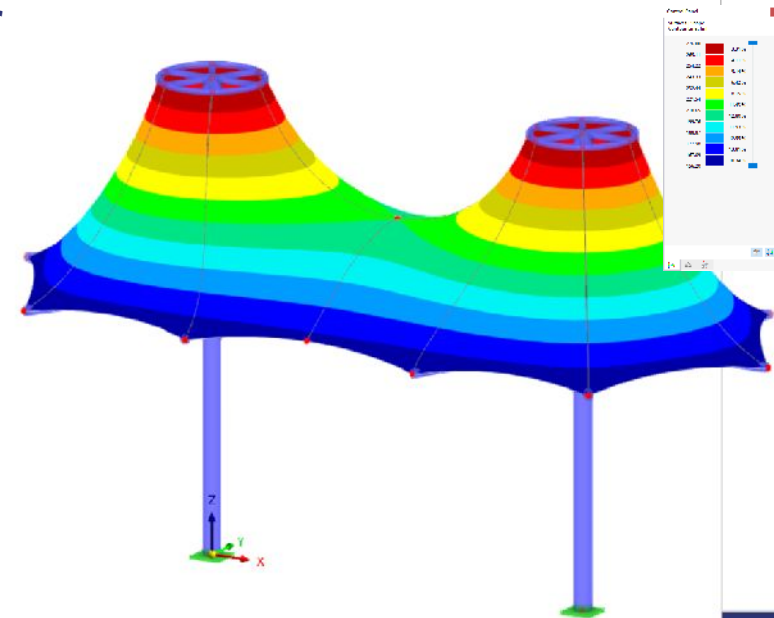
- 01 Cable form-finding workflow
- 02 Fabric membrane structure form-finding workflow
- 03 Load definition including wind load generation in RWIND 2
- 04 Supporting structure design in the Steel Design Add-on
- 05 Review of analysis and design results





## Improved RFEM 6 Form-Finding Features

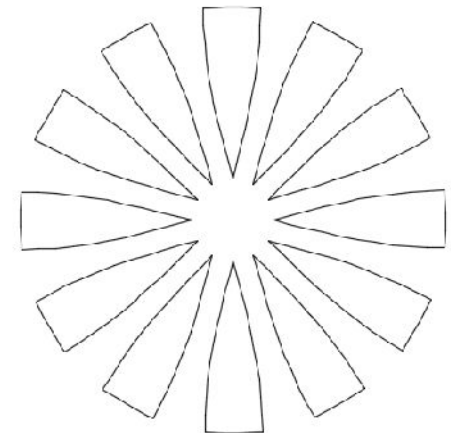
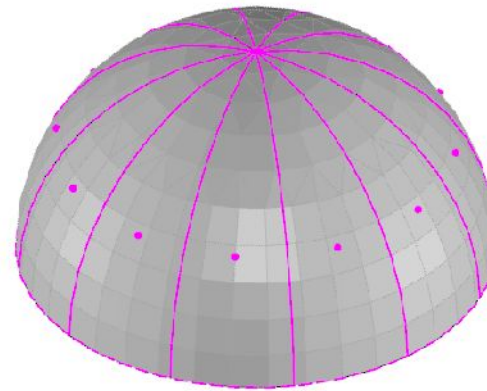
- Form-finding now defined as a “load” within a load case
- Define form-finding load case as an initial condition for other load cases/combinations
- Ability to define multiple form-finding scenarios in one model
- Additional cable form-finding member load options (geometric and force definition types)
- Improved surface form-finding projection calculation methods (orthogonal and radial)



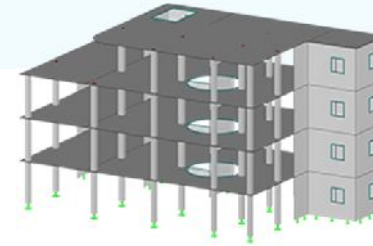
# Future RFEM 6 Development

## Cutting Pattern Add-on

- Flattening process to produce cutting patterns
- Tension membrane or pneumatic cushions
- Improved cutting line definition
- Pattern export via .dxf



# Free Online Services



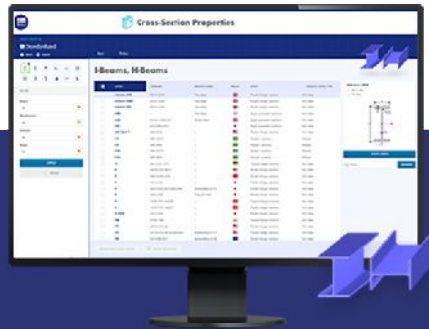
## Geo-Zone Tool

Dlubal Software provides an online tool with snow, wind and seismic zone maps.



## Cross-Section Properties

With this free online tool, you can select standardized sections from an extensive section library, define parametrized cross-sections and calculate its cross-section properties.



## FAQs & Knowledge Base

Access frequently asked questions commonly submitted to our customer support team and view helpful tips and tricks articles to improve your work.



## Models to Download

Download numerous example files here that will help you to get started and become familiar with the Dlubal programs.





# Free Online Services

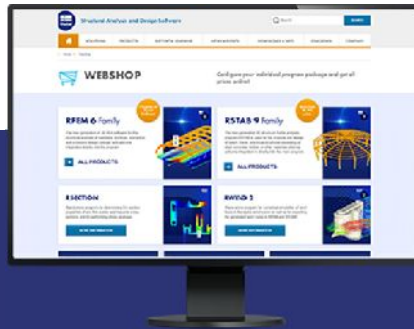
## Youtube Channel - Webinars, Videos

Videos and webinars about the structural engineering software.



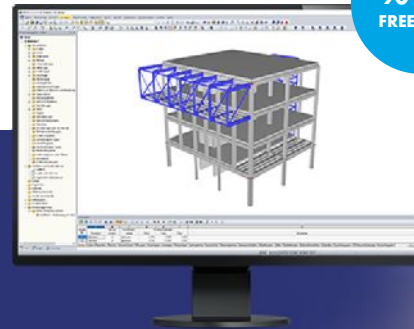
## Webshop with Prices

Configure your individual program package and get all prices online!



## Trial Licenses

The best way how to learn using our programs is to simply test them for yourself. Download a 90-day free trial version of our structural analysis & design software.





# — Dlubal Software Information



Visit website

[www.dlubal.com](http://www.dlubal.com)

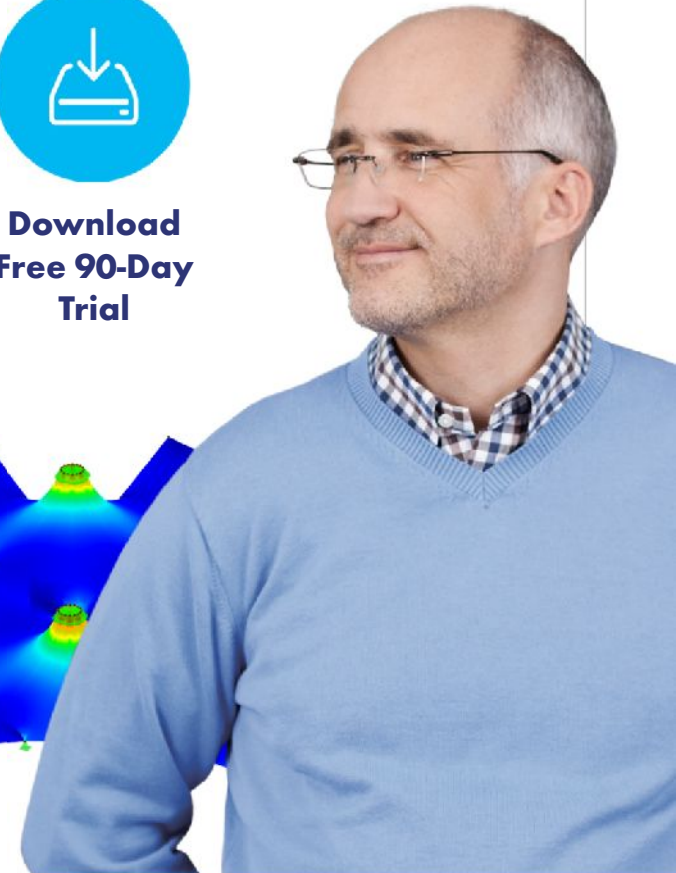
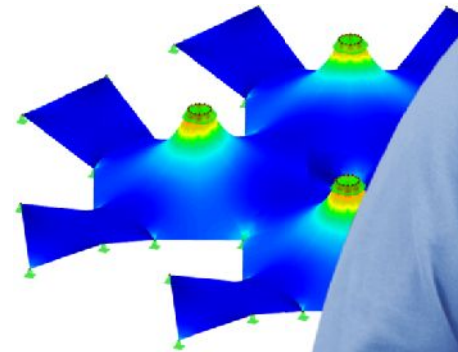
- Videos and recorded webinars
- Events and conferences
- Knowledge Base articles
- FAQs



Register for  
Upcoming  
Webinars



Download  
Free 90-Day  
Trial



**Dlubal Software, Inc.**

The Graham Building, 30 South 15th Street,  
15th Floor, Philadelphia, PA 19102

Phone: (267) 702-2815  
Email: [info-us@dlubal.com](mailto:info-us@dlubal.com)



# Webinars and PDH

## Upcoming Webinars

- 1 Register [www.dlubal.com](http://www.dlubal.com)
- 2 Support & Learning → Webinars
- 3 Registration through email



## PDH Certificates

- 1 Automatically emailed to participants
- 2 Available for the full presentation
- 3 Additional attendees request [info-us@dlubal.com](mailto:info-us@dlubal.com)





[www.dlubal.com](http://www.dlubal.com)