



Structural Analysis & Design Software

www.dlubal.com



Dipl.-Ing. (FH) Andreas Hörold
Organizer

Marketing & Public Relations
Dlubal Software GmbH



Ing. Doğukan Karataş, M.Sc.
Co-Organizer

Product Engineer
Dlubal Software GmbH



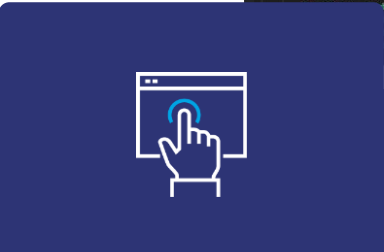
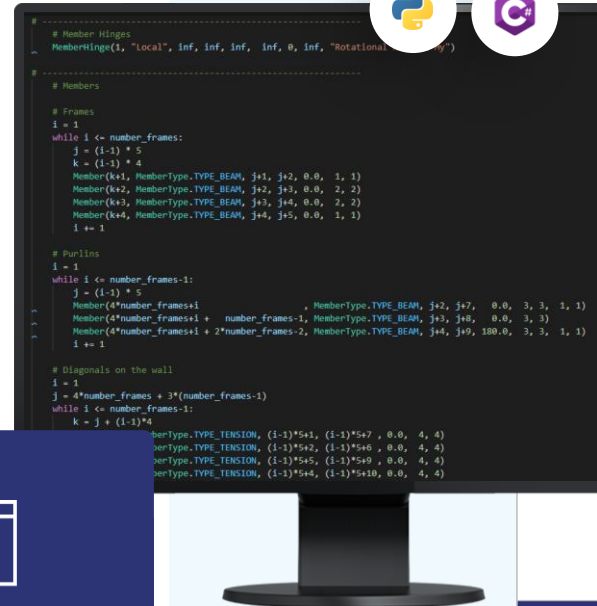
Ing. Jaroslav Brož, PhD
Co-Organizer

Scrum Master
Dlubal Software Prague



Webinar

Webservice & API in RFEM 6



Questions During the Presentation



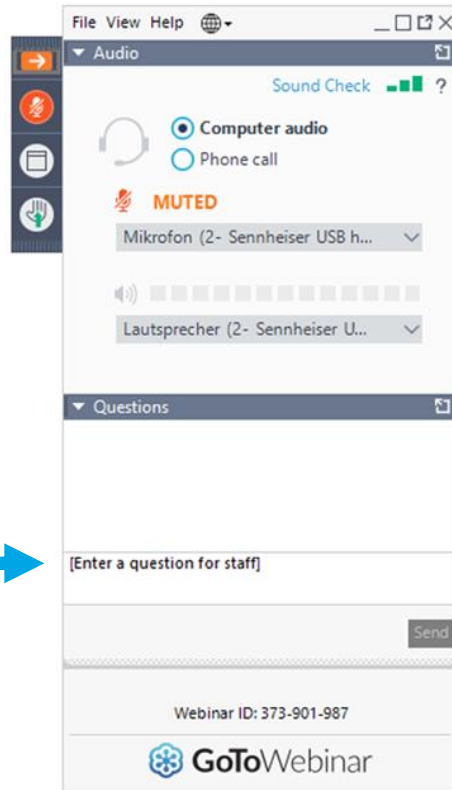
GoToWebinar Control Panel
Desktop



E-mail: info@dlubal.com



Show or hide control panel



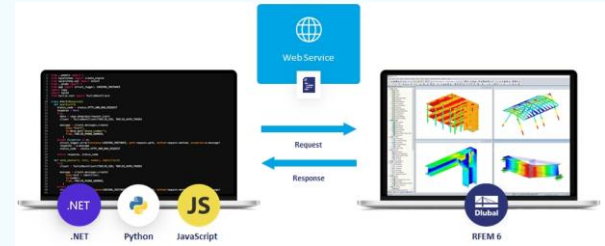
Adjust audio settings

Ask questions



CONTENT

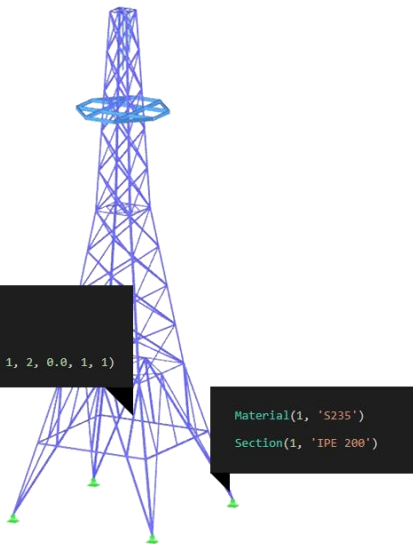
- 01 Benefits & Application Areas
- 02 What is API? What are Web Services?
- 03 Getting Started & Installation
- 04 Examples





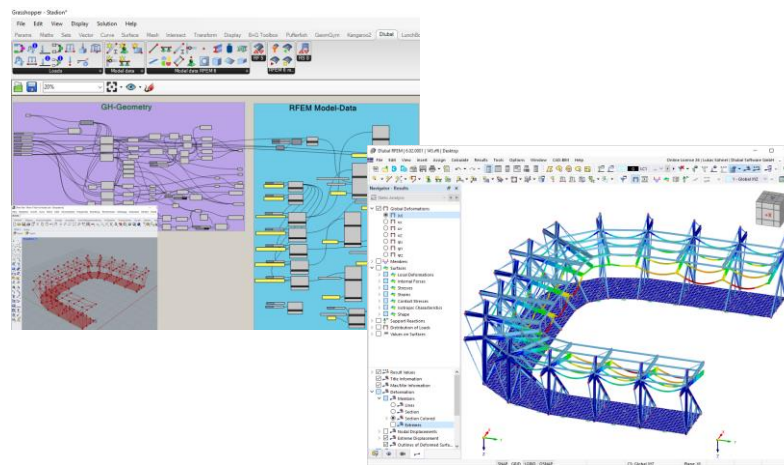
Benefits & Application Areas

- Parametrized structures & modular structures



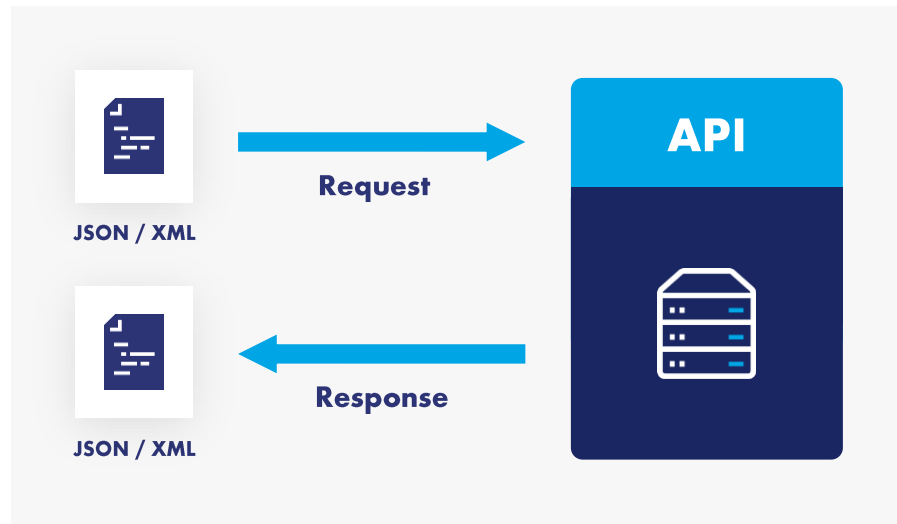
- Optimization & Generative design

- Automation



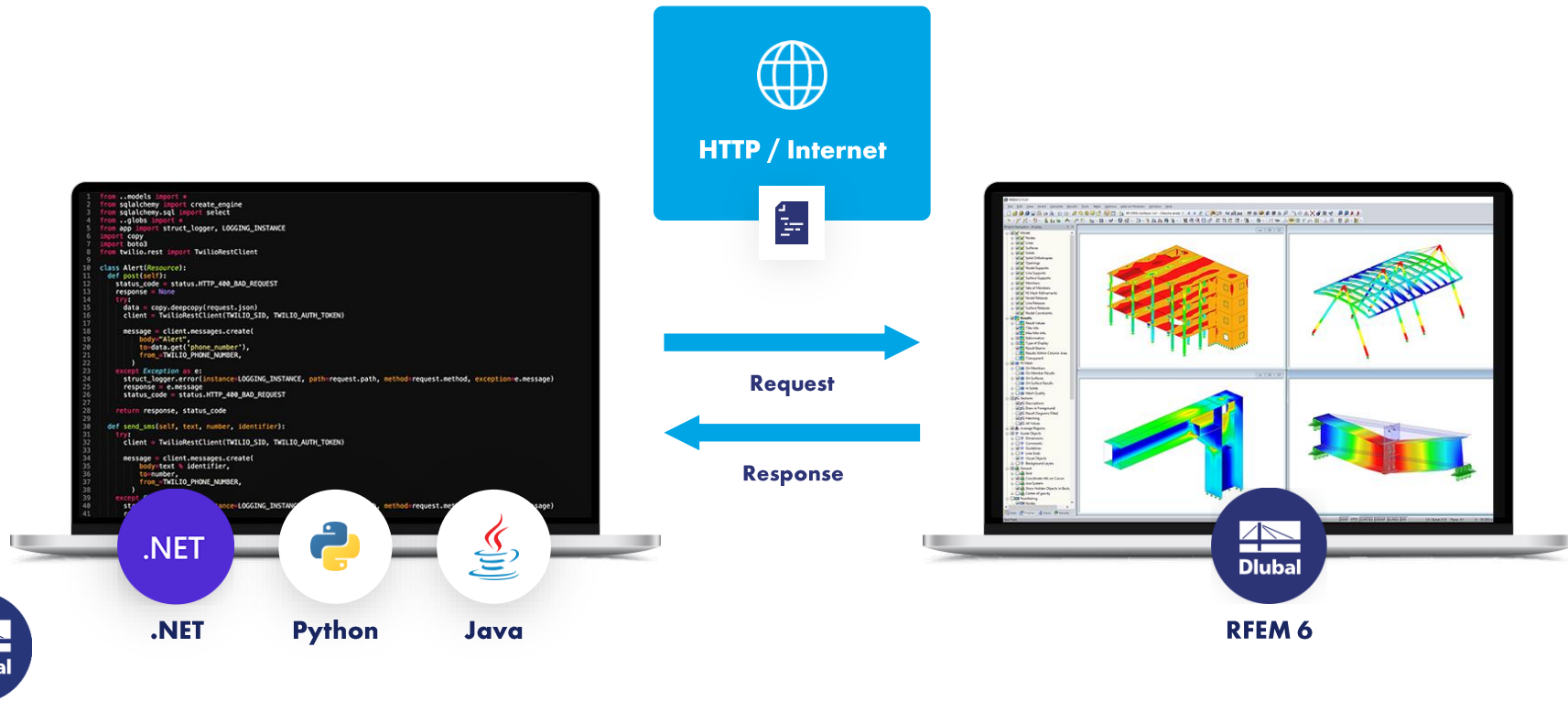


What is API?



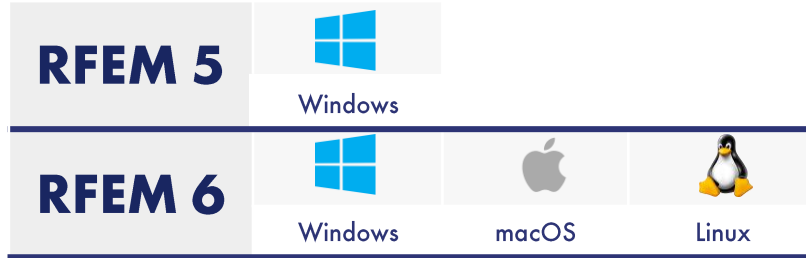


What are Web Services?



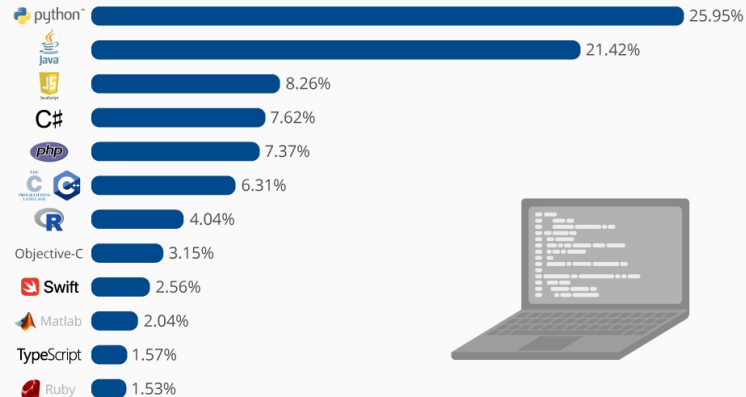


Difference between COM and Web Services



The Most Popular Programming Languages

Share of the most popular programming languages in the world*





Getting Started & Installation

- Download Repository as ZIP

GitHub repository page for `DLubal-Software/RFEM_Python_Client`. The 'Code' dropdown menu is open, showing options: Clone (HTTPS, GitHub CLI), Open with GitHub Desktop, and Download ZIP. The repository file list is visible below.

File	Description	Time
github	Right places for CODEOWNERS	
vscode	Merge remote-tracking branch 're'	
Examples	Merge pull request #112 from Dlu	
RFEM	Merge remote-tracking branch 're'	
UnitTests	bug 24241 fixed	
assets	Added report from UT and settings	5 months ago
docs	Merge pull request #104 from Dlubal-Software/dogukaratas-Docume...	19 days ago
package	added init file	5 days ago
.gitignore	unit test fix	21 days ago
.nojekyll	moved nojekyll	5 months ago
LICENSE	Initial commit.	11 months ago
PythonWSClient.code-workspace	Example of export_to and save	8 months ago
README.md	updated coverage	13 days ago
pylinterc	R0912, W1405 added	yesterday

- Clone Repository via Git Bash

```

MINGW64~/c/Users/KaratasD/Desktop
KaratasD@karatasD-nb1 MINGW64 ~/Desktop
$ git clone https://github.com/Dlubal-Software/RFEM_Python_Client.git

```

- Install Library via PyPi

PyPI project page for `RFEM 1.4.0`. The page shows the package name, version, and a button to install it: `pip install RFEM`. The release date is Mar 24, 2022.

```

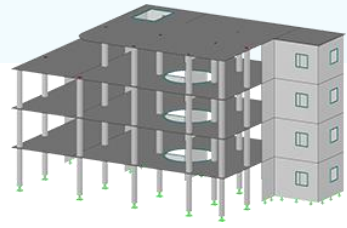
Command Prompt
Microsoft Windows [Version 10.0.19043.1526]
(c) Microsoft Corporation. All rights reserved.

C:\Users\KaratasD>pip install RFEM

```

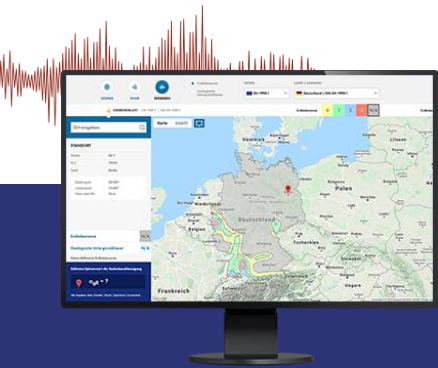


Free Online Services



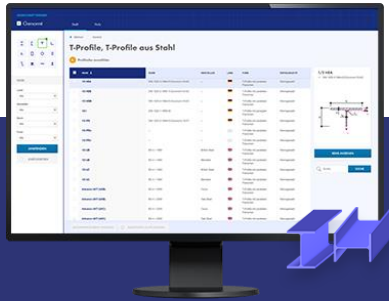
Geo-Zone Tool

Dlubal Software provides an online tool with snow, wind and seismic zone maps.



Cross-Section Properties

With this free online tool, you can select standardized sections from an extensive section library, define parametrized cross-sections and calculate its cross-section properties.



FAQs & Knowledge Base

Access frequently asked questions commonly submitted to our customer support team and view helpful tips and tricks articles to improve your work.



Models to Download

Download numerous example files here that will help you to get started and become familiar with the Dlubal programs.

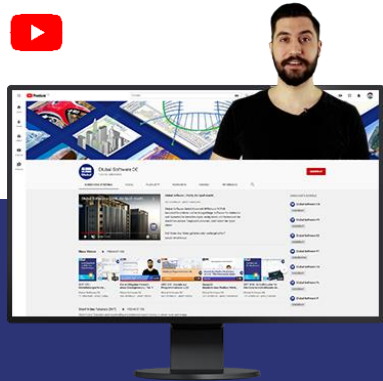




Free Online Services

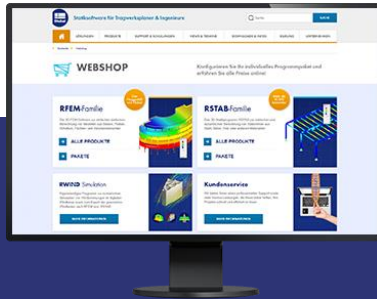
Youtube Channel - Webinars, Videos

Videos and webinars about the structural engineering software.



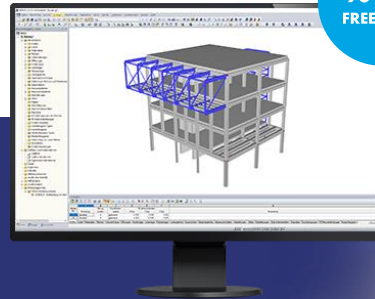
Webshop with Prices

Configure your individual program package and get all prices online!



Trial Licenses

The best way how to learn using our programs is to simply test them for yourself. Download a 90-day free trial version of our structural analysis & design software.



90-DAY FREE TRIAL



We offer free support via email and chat



— Get Further Details About Dlubal



Visit website
www.dlubal.com

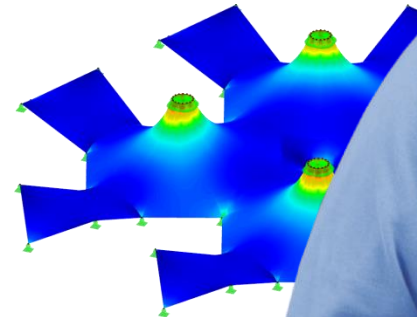
- Videos and recorded webinars
- Newsletters
- Events and conferences
- Knowledge Base articles



See Dlubal
Software in
action in a
webinar



Download
free trial
license



Dlubal Software GmbH
Am Zellweg 2,
93464 Tiefenbach, Germany

Phone: +49 9673 9203-0
E-mail: info@dlubal.com



www.dlubal.com