



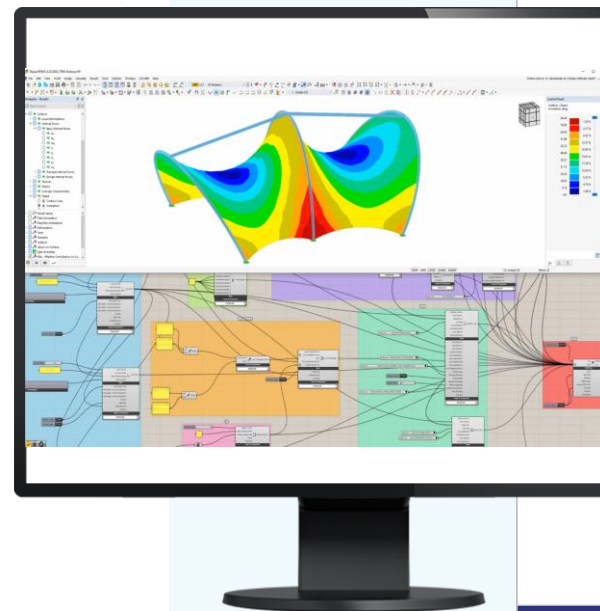
Structural Analysis & Design Software

www.dlubal.com



Webinar

Data Exchange Between Rhino/Grasshopper and RFEM 6



Abdurzzak Ali, M.Sc.
Presenter

Marketing & Public Relations
Dlubal Software GmbH



Dipl.-Ing. (FH) Lukas Sühnel
Moderator

Product Engineering & Customer Support
Dlubal Software GmbH



Questions During the Presentation



GoToWebinar Control Panel
Desktop



E-mail: info@dlubal.com



Show or hide
control panel



Adjust audio
settings

File View Help

Audio

Sound Check [Progress Bar] ?

Computer audio
 Phone call

MUTED

Mikrofon (2- Sennheiser USB h...)

Lautsprecher (2- Sennheiser U...)

Questions

[Enter a question for staff]

Send

Webinar ID: 373-901-987

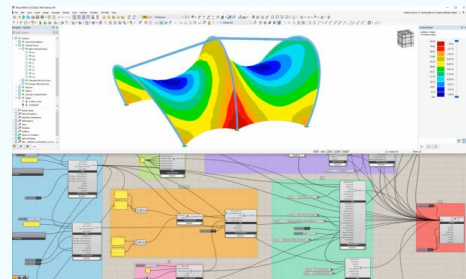
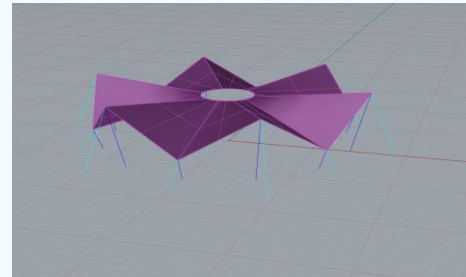
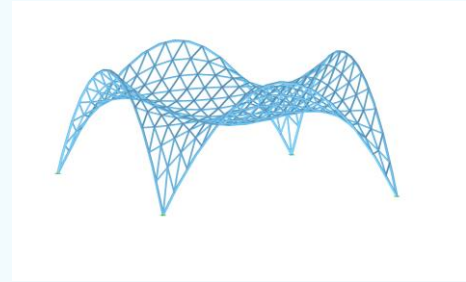
GoToWebinar

Ask questions



CONTENT

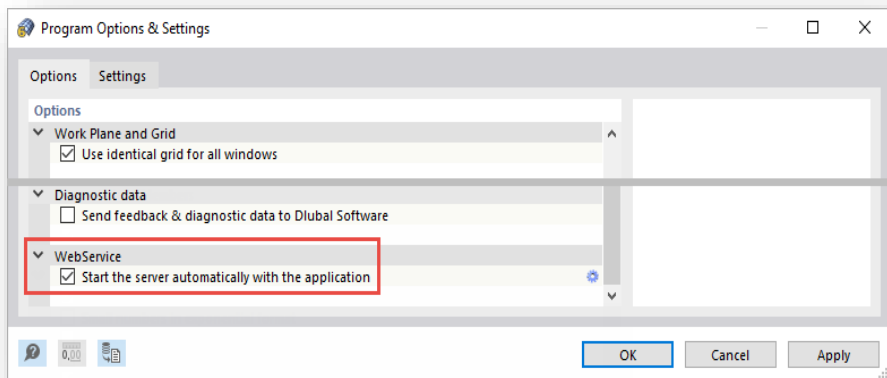
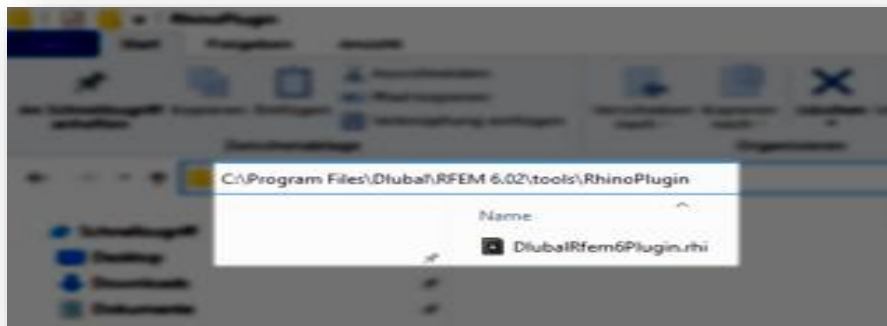
- 01 General Information
- 02 Data exchange between Rhino and RFEM 6
- 03 Data exchange between Grasshopper and RFEM 6
- 04 Modeling of a membrane structure





General Information

- Manual subsequent installation of the plugin
- Direct interface (web service)
→ Both programs on one computer
- No longer requires a web service license
- Start the server to use web services

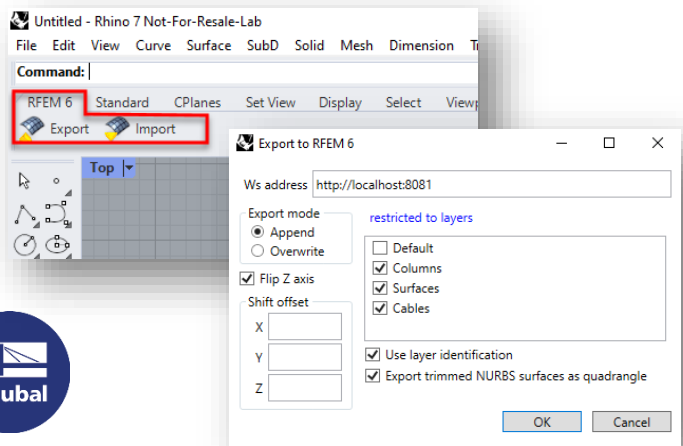




Plug-ins for Rhino and Grasshopper

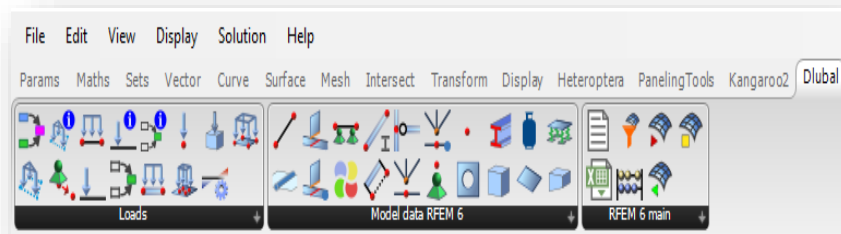
Rhino-RFEM-Link

- Import and Export
- Lines and Surfaces



GH-RFEM-Link

- (Import) and Export
- Model data & Supports
- Load Cases/Combinations
- Loads





Recent und Future Developments

Recently implemented

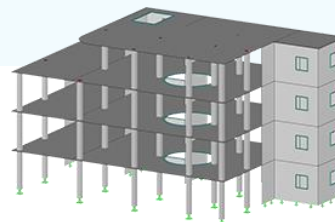
- Component for opening loads
- Extensions for form finding calculations
- Component for nodal release
- Component for line release
- Component for line hinge
- Export RFEM 6 results in CSV or XML file
- Component to start the analysis in RFEM 6

Planned

- Component for FE-mesh settings
- Import of results into GH
- Rendering of member incl. profile shapes
- Extend Surface Component with functions for the rotation of the local axis system

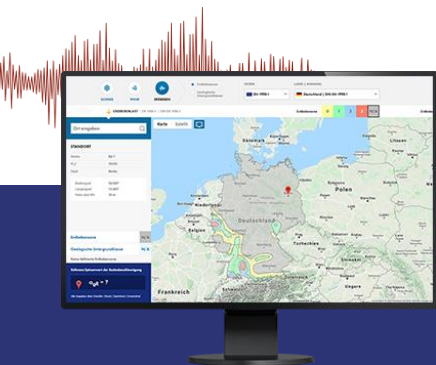


Free Online Services



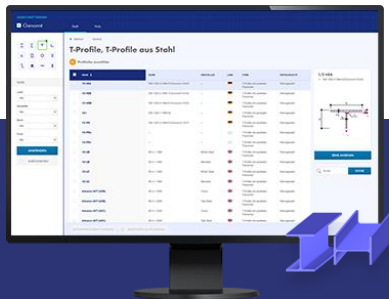
Geo-Zone Tool

Dlubal Software provides an online tool with snow, wind and seismic zone maps.



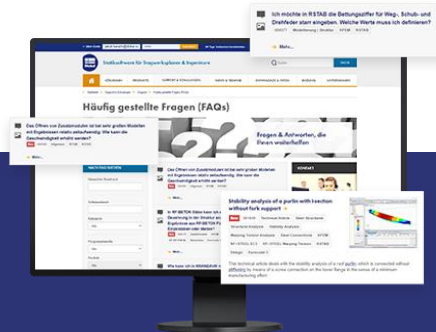
Cross-Section Properties

With this free online tool, you can select standardized sections from an extensive section library, define parametrized cross-sections and calculate its cross-section properties.



FAQs & Knowledge Base

Access frequently asked questions commonly submitted to our customer support team and view helpful tips and tricks articles to improve your work.



Models to Download

Download numerous example files here that will help you to get started and become familiar with the Dlubal programs.





Free Online Services

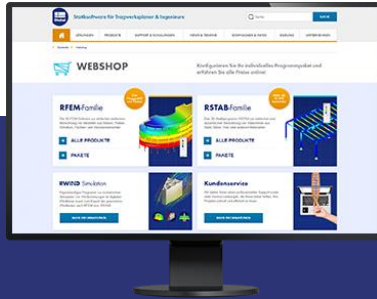
Youtube Channel - Webinars, Videos

Videos and webinars about the structural engineering software.



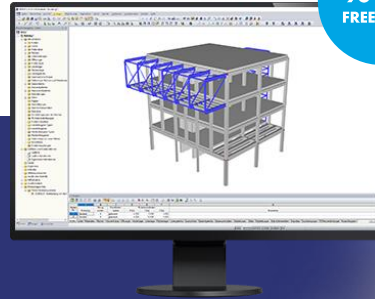
Webshop with Prices

Configure your individual program package and get all prices online!



Trial Licenses

The best way how to learn using our programs is to simply test them for yourself. Download a 90-day free trial version of our structural analysis & design software.



We offer free support via email and chat



— Get Further Details About Dlubal



Visit website
www.dlubal.com

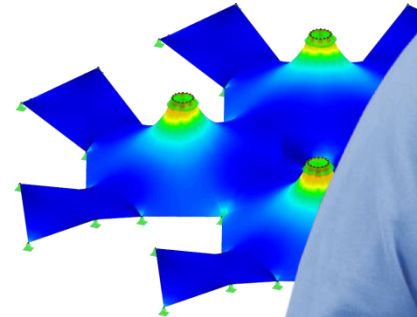
- Videos and recorded webinars
- Newsletters
- Events and conferences
- Knowledge Base articles



See Dlubal Software in action in a webinar



Download free trial license



Dlubal Software GmbH
Am Zellweg 2,
93464 Tiefenbach, Germany

Phone: +49 9673 9203-0
E-mail: info@dlubal.com



www.dlubal.com