

# Licensing via NET Softlock

RSTAB 8, RFEM 5, SHAPE-THIN 8 and RX-TIMBER 2 can be licensed in the network by means of a software key ("softlock" *SL*). With that alternative to the USB network dongle, the authorization depends on specific serial numbers of the server hardware (or on the virtual MAC address and CPU characteristics if you run a virtual machine). The full versions of the above-mentioned programs can then be started on the computers in the network without local keys.

**Note:** The NET Softlock must be activated with administrator rights.

## Installing dongle driver

Install the current dongle driver on the server. You can download it by the following links:

### GUI version (graphical user interface):

[http://download.dlupal.com/?file=Sentinel\\_LDK\\_GUI\\_setup.zip](http://download.dlupal.com/?file=Sentinel_LDK_GUI_setup.zip)

### Command line version:

[http://download.dlupal.com/?file=Sentinel\\_LDK\\_cmd\\_line\\_setup.zip](http://download.dlupal.com/?file=Sentinel_LDK_cmd_line_setup.zip)

After unpacking the package you can install it by means of the command line using the command **haspdinst -i**.

## Executing ActivationKey

Download the file *ActivationKey.zip* via the following link:

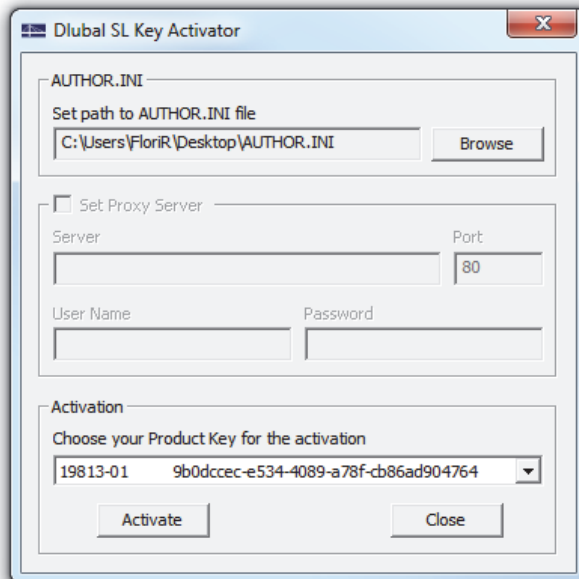
<http://download.dlupal.com/?file=ActivationKey.zip>

Save that file on the server and then unpack the ZIP file.

Start the *ActivateKey.exe* file on the server.

## Importing authorization file

The *Dlupal SL Key Activator* dialog box appears.



Use the [Browse] button to set the path to the *AUTHOR.INI* file. You have received that file from us by email.

If the authorization file is valid, the key number is shown in the *Activation* dialog section.

## Executing activation

Click the [Activate] button to enable your software license. Make sure that you are connected to the internet.

When the activation has been successful, the licenses for the programs RSTAB, RFEM, SHAPE-THIN and RX-TIMBER are ready for use in the network.

Your DLUBAL SOFTWARE team