



Structural Analysis & Design Software



www.dlubal.com



Amy Heilig, PE
Presenter

CEO - USA Office



Alex Bacon, EIT
Moderator

Technical Support Engineer



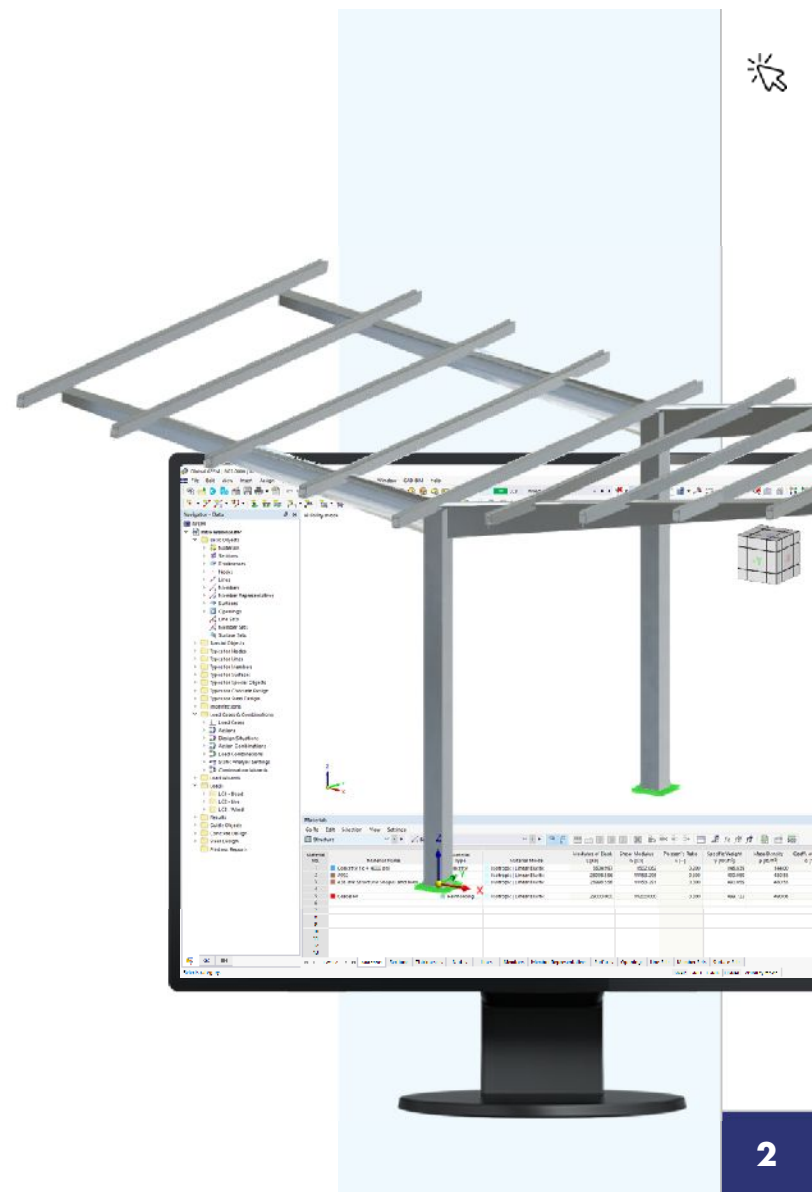
Cisca Tjoa, PE
Moderator

Technical Support Engineer



Webinar

ADM 2020 Aluminum Design in RFEM 6



Questions During the Presentation

GoToWebinar Control Panel Desktop

Email: info-us@dlubal.com



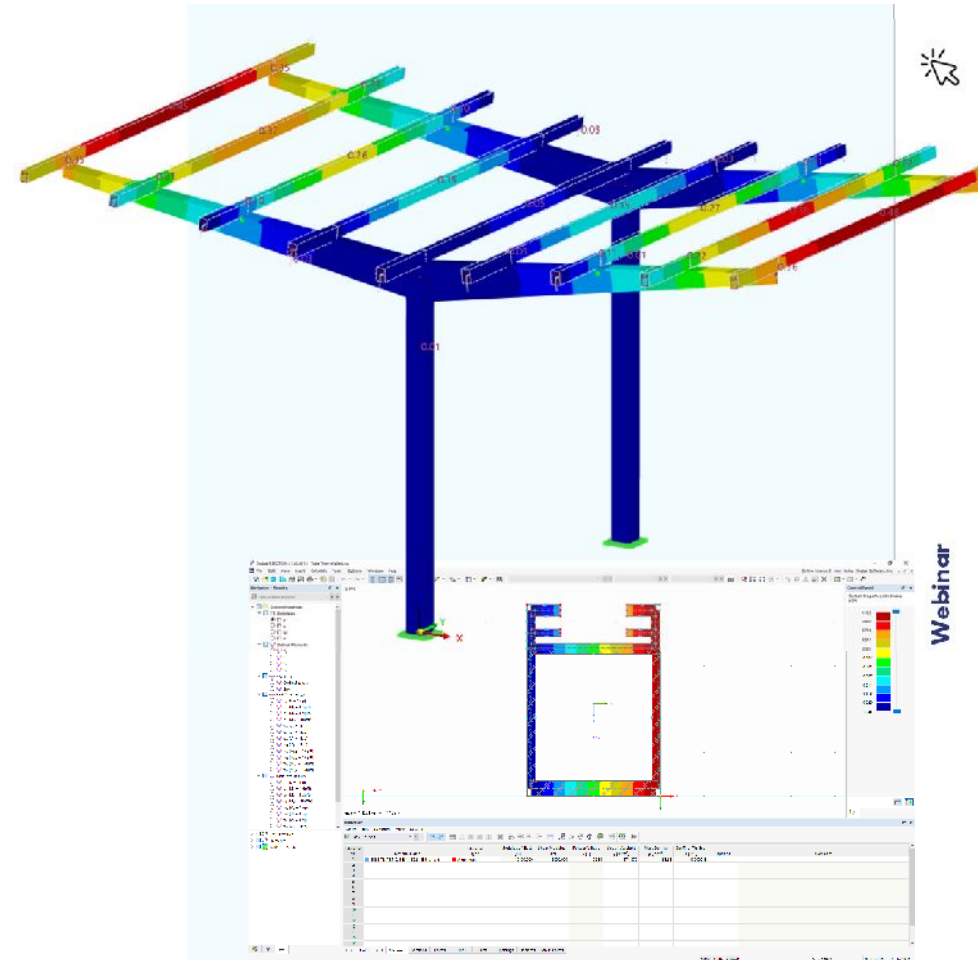
The screenshot shows the GoToWebinar control panel interface. Three dark blue callout boxes with white text and blue arrows point to specific features:

- Show or hide control panel:** Points to the vertical sidebar on the left containing icons for audio, chat, and other controls.
- Adjust audio settings:** Points to the 'Audio' window, which includes a 'Sound Check' indicator, radio buttons for 'Computer audio' and 'Phone call', a 'MUTED' status, and dropdown menus for 'Mikrofon' and 'Lautsprecher'.
- Ask questions:** Points to the 'Questions' section, which features a text input field with the placeholder '[Enter a question for staff]', a 'Send' button, and the 'Webinar ID: 373-901-987'.



CONTENT

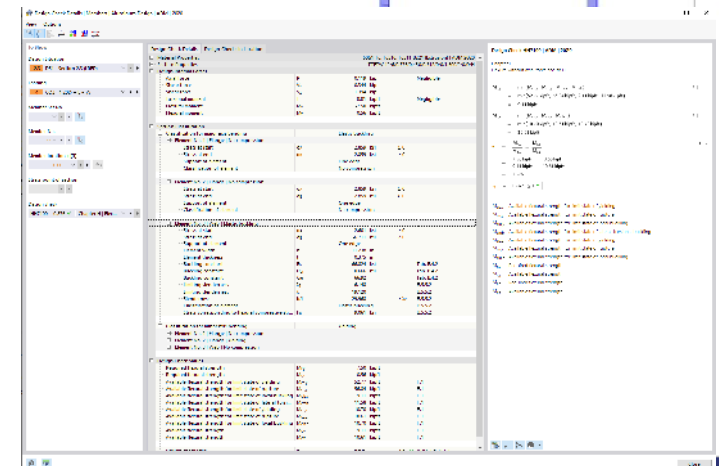
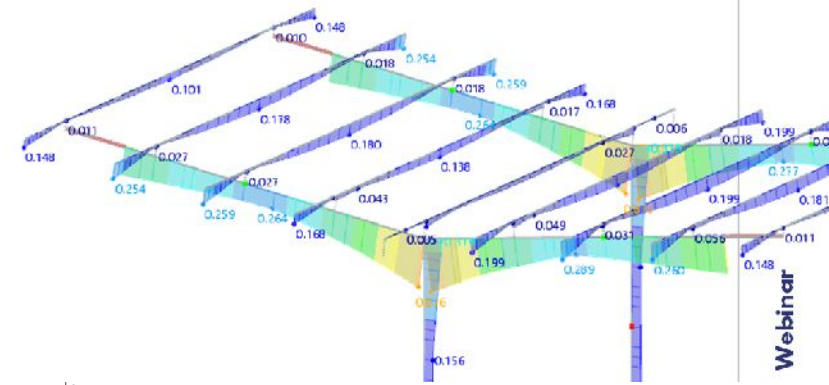
- 01 Custom extruded section with .dxf import in RSECTION
- 02 Structure modeling and loading workflow in RFEM 6
- 03 Member design input data (effective lengths, design supports, etc.)
- 04 Member design acc. to ADM 2020 using the Aluminum Design add-on
- 05 Analysis and design results review





Aluminum Design Add-on New Features

- Integration of add-on directly in main program
- Effective length definition for unbraced lengths
- New design supports for deflection checks
- Member shear considering transverse stiffeners (Sect. G.2)
- Single angle bending considering geometric axes (Sect. F.5.1)
- Detailed design output of member checks



RSECTION Analysis Options

Thin-Walled Analysis

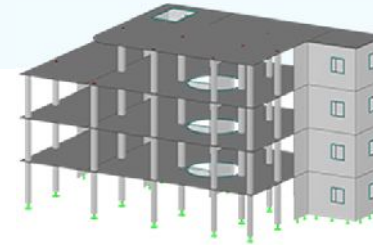
- Thin-walled cross-sections (aluminum, steel, cold-formed steel, etc.)
- Analytical calculation applied
- Stress and force flow along element length, not width
- Torsional and warping properties for elements only (i.e. fillets neglected)
- Subpanel generation for local buckling checks

Finite Element Analysis

- Massive cross-sections (concrete, timber, etc.)
- Finite element method applied
- Stress and force flow along element length and width
- Torsional and warping properties for full cross-section
- No subpanel generation for local buckling checks



Free Online Services



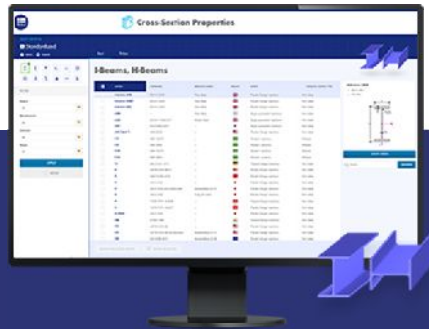
Geo-Zone Tool

Dlubal Software provides an online tool with snow, wind and seismic zone maps.



Cross-Section Properties

With this free online tool, you can select standardized sections from an extensive section library, define parametrized cross-sections and calculate its cross-section properties.



FAQs & Knowledge Base

Access frequently asked questions commonly submitted to our customer support team and view helpful tips and tricks articles to improve your work.



Models to Download

Download numerous example files here that will help you to get started and become familiar with the Dlubal programs.

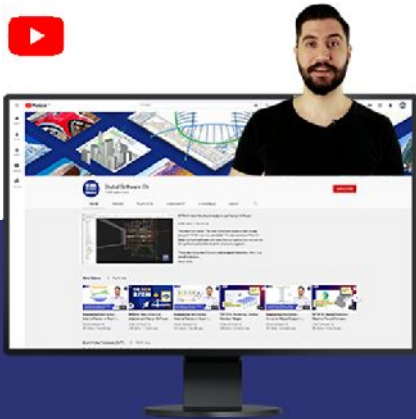




Free Online Services

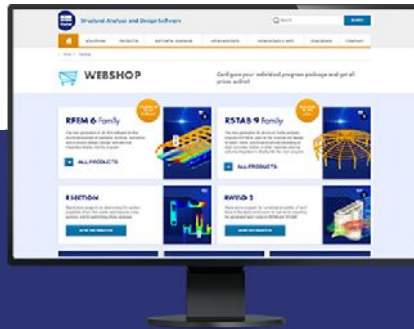
Youtube Channel - Webinars, Videos

Videos and webinars about the structural engineering software.



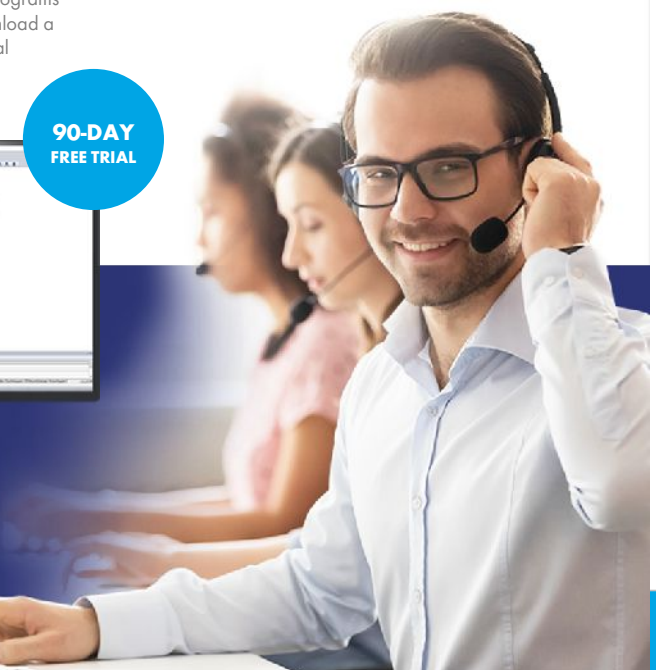
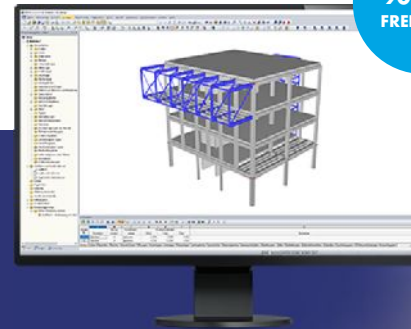
Webshop with Prices

Configure your individual program package and get all prices online!



Trial Licenses

The best way how to learn using our programs is to simply test them for yourself. Download a 90-day free trial version of our structural analysis & design software.



— Dlubal Software Information



Visit website

www.dlubal.com

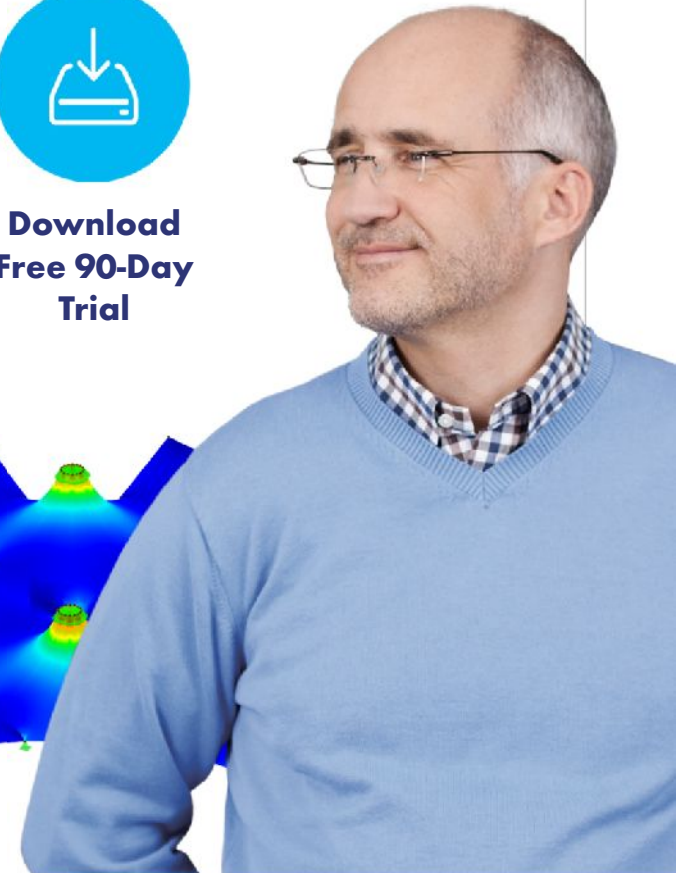
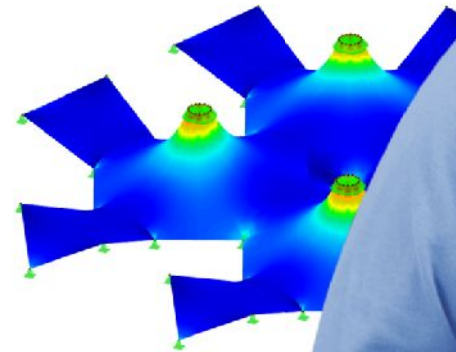
- Videos and recorded webinars
- Events and conferences
- Knowledge Base articles
- FAQs



Register for
Upcoming
Webinars



Download
Free 90-Day
Trial



Dlubal Software, Inc.
30 South 15th Street, 15th Floor
Philadelphia, PA 19102

Phone: (267) 702-2815
Email: info-us@dlubal.com



Webinars and PDH

Upcoming Webinars

- 1 Register www.dlubal.com
- 2 Support & Learning → Webinars
- 3 Registration through email



PDH Certificates

- 1 Automatically emailed to participants
- 2 Available for the full presentation
- 3 Additional attendees request info-us@dlubal.com





www.dlubal.com