



Structural Analysis & Design Software



www.dlubal.com



Alex Bacon, EIT

Presenter

Technical Support Engineer



Amy Heilig, PE

Moderator

CEO - USA Office



Cisca Tjoa, PE

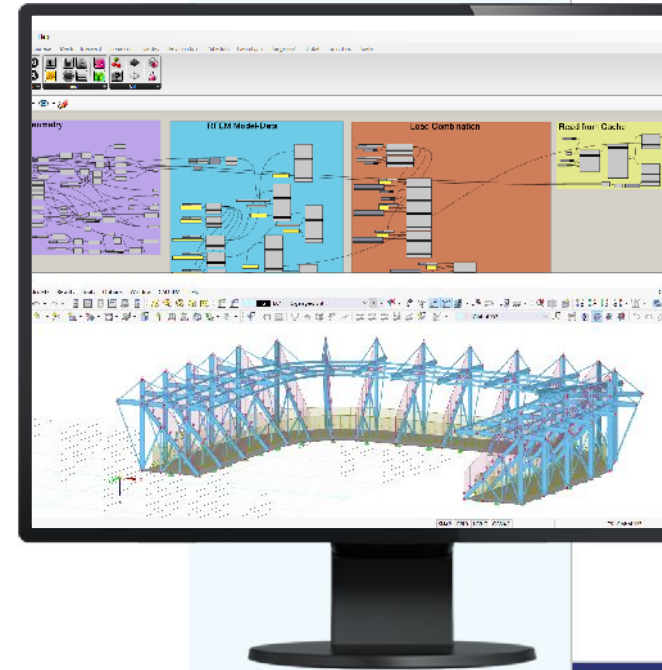
Moderator

Technical Support Engineer



Webinar

Rhino/Grasshopper Integration in RFEM 6



Questions During the Presentation

GoToWebinar Control Panel Desktop

Email: info-us@dlubal.com



The screenshot shows the GoToWebinar control panel interface. It includes a menu bar with 'File', 'View', and 'Help'. Below the menu bar are three tabs: 'Audio', 'Questions', and a partially visible 'Muted' tab. The 'Audio' tab is active and shows a 'Sound Check' indicator with a green signal strength bar and a question mark. Underneath, there are radio buttons for 'Computer audio' (selected) and 'Phone call'. A red 'MUTED' indicator is present. Below the muted indicator are dropdown menus for 'Mikrofon (2- Sennheiser USB h...' and 'Lautsprecher (2- Sennheiser U...'. A volume slider is also visible. The 'Questions' tab is active and shows a text input field with the placeholder '[Enter a question for staff]' and a 'Send' button. At the bottom of the panel, the 'Webinar ID: 373-901-987' and the 'GoToWebinar' logo are displayed. Three callout boxes with blue arrows point to specific features: 'Show or hide control panel' points to the top-left corner of the panel; 'Adjust audio settings' points to the 'Audio' tab; and 'Ask questions' points to the text input field in the 'Questions' tab.



CONTENT

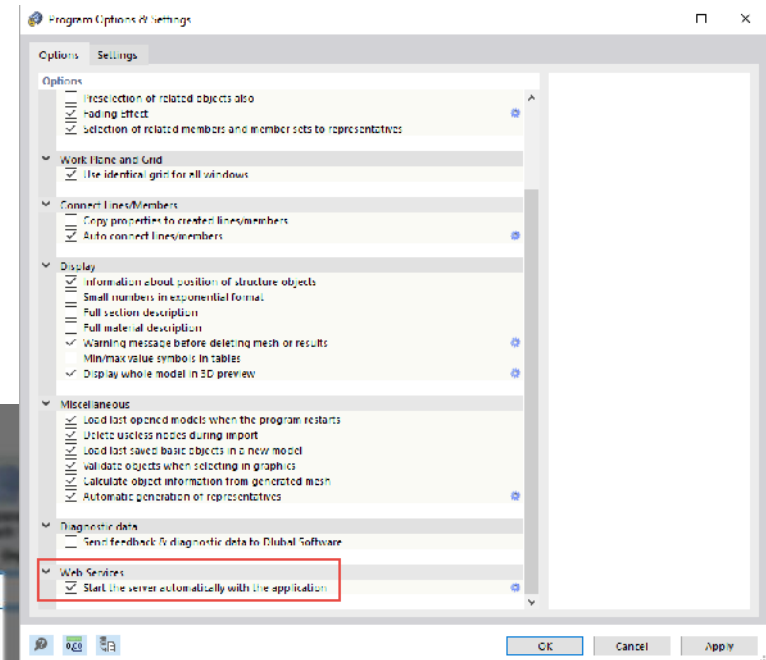
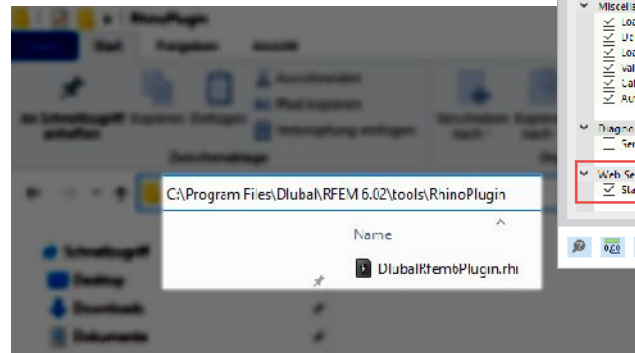
- 01 General Information
- 02 Data exchange between Rhino and RFEM 6
- 03 Data exchange between Grasshopper and RFEM 6





Requirements / Installation

- Installation of the plug-in must be done manually
- Currently requires a Webservice license
- Start the server to use WeServices





Overview

Rhino-GH Plug-in



Rhino-RFEM Link

- Import and Export
- Lines and Surfaces

GH-RFEM Link

- (Import) and Export
- Model Data & Supports
- Load Cases/Load Combinations
- Loads





Workflow

Model Generation



Analysis/Design



Visualization
Documentation

The collage displays the following components:

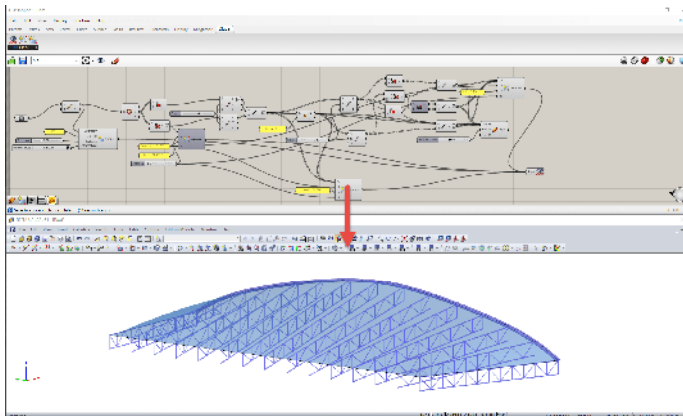
- Top Left:** A screenshot of the software's menu bar and toolbar.
- Top Middle:** Two panels labeled 'GH-Geometry' and 'RFEM Model-Data' showing a complex network of nodes and connections.
- Bottom Left:** A 3D perspective view of a curved structural model with a red mesh.
- Center:** A large 3D perspective view of a curved structural model with a blue mesh and a color-coded stress distribution.
- Bottom Right:** Two screenshots of data tables. The first table shows structural analysis results with columns for 'MEMBER', 'TYPE', 'VALUE', and 'UNIT'. The second table shows design results with columns for 'MEMBER', 'TYPE', 'VALUE', and 'UNIT'. Below the tables is a smaller 3D perspective view of the model.



Future Developments

Short-term

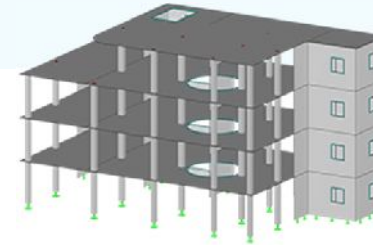
- Loads on opening perimeter component
- Rotation of lines via help-node



Long-term

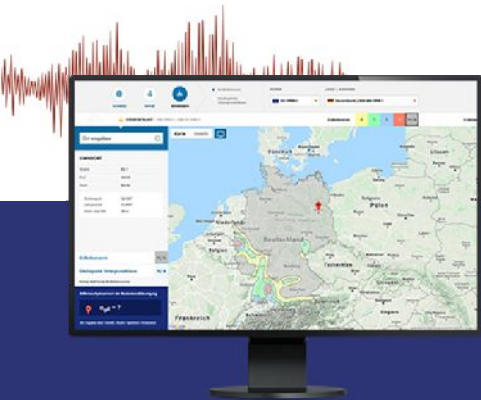
- Extend/add new features related to model and load data
- Start calculation in RFEM 6 via GH
- Read RFEM 6 results back into GH
- Display outlines of members with import into Rhino/GH (currently lines only)

Free Online Services



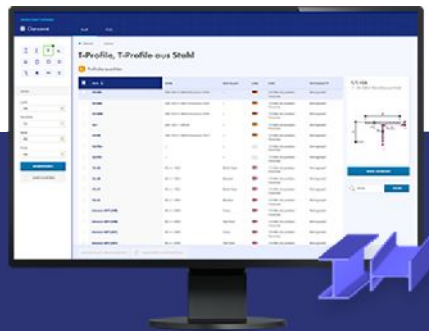
Geo-Zone Tool

Dlubal Software provides an online tool with snow, wind and seismic zone maps.



Cross-Section Properties

With this free online tool, you can select standardized sections from an extensive section library, define parametrized cross-sections and calculate its cross-section properties.



FAQs & Knowledge Base

Access frequently asked questions commonly submitted to our customer support team and view helpful tips and tricks articles to improve your work.



Models to Download

Download numerous example files here that will help you to get started and become familiar with the Dlubal programs.

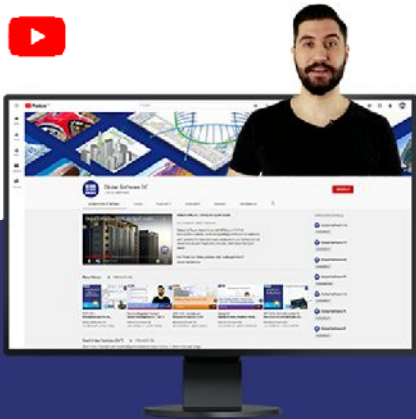




Free Online Services

Youtube Channel - Webinars, Videos

Videos and webinars about the structural engineering software.



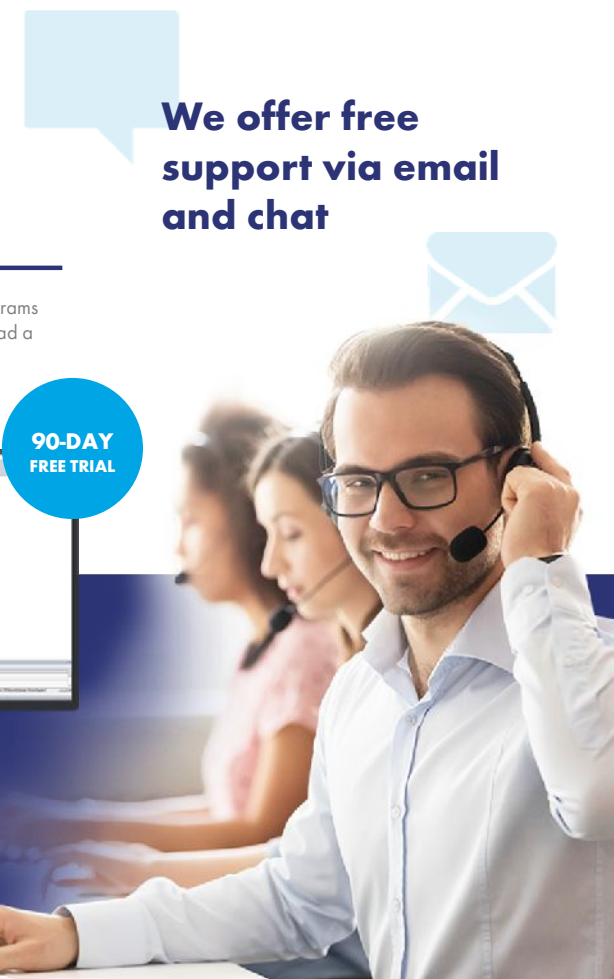
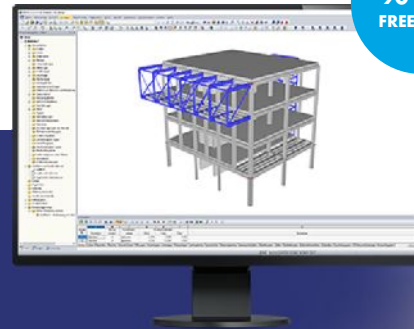
Webshop with Prices

Configure your individual program package and get all prices online!



Trial Licenses

The best way how to learn using our programs is to simply test them for yourself. Download a 90-day free trial version of our structural analysis & design software.



We offer free support via email and chat



— Dlubal Software Information



- Videos and recorded webinars
- Events and conferences
- Knowledge Base articles
- FAQs

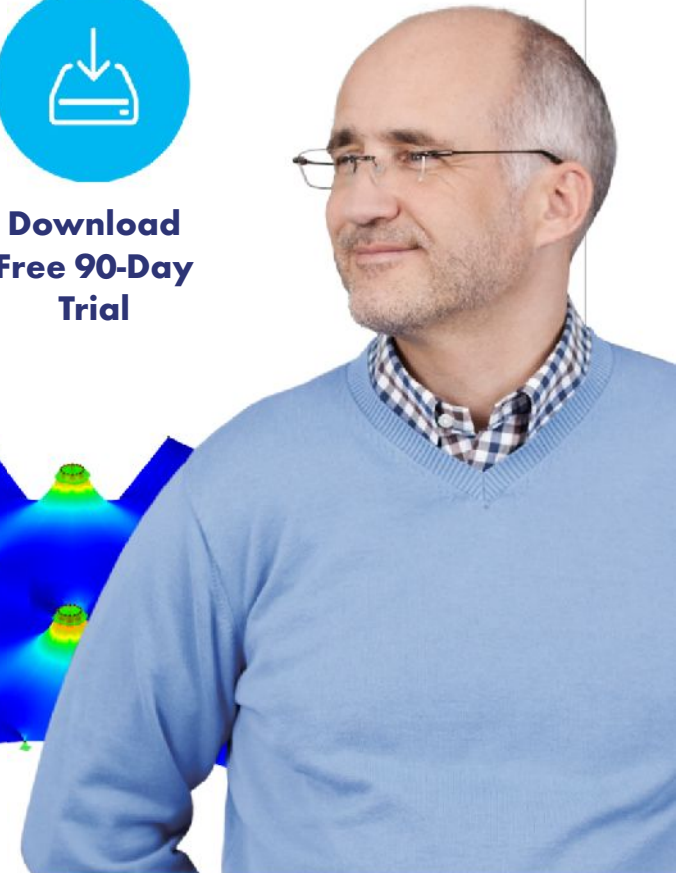
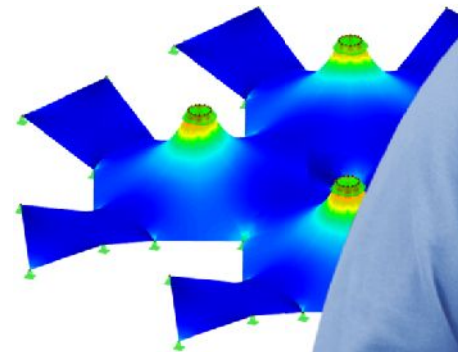
Visit website
www.dlubal.com



Register for
Upcoming
Webinars



Download
Free 90-Day
Trial



Dlubal Software, Inc.
The Graham Building, 30 South 15th Street,
15th Floor, Philadelphia, PA 19102

Phone: (267) 702-2815
Email: info-us@dlubal.com



Webinars and PDH

Upcoming Webinars

- 1 Register www.dlubal.com
- 2 Support & Learning → Webinars
- 3 Registration through email



PDH Certificates

- 1 Automatically emailed to participants
- 2 Available for the full presentation
- 3 Additional attendees request info-us@dlubal.com





www.dlubal.com